

**Existing Facilities**

- ▲ BPA Substation
- △ Non-BPA Substation
- ✈ Airports
- BPA Transmission Lines
- ▭ State Parks and Preserves
- ▭ Columbia River Gorge National Scenic Area

**Proposed Facilities**

- West Alternative
- Middle Alternative
- East Alternative
- ▲ Knight Substation Sites
- Line Mile Markers

**Wasco County Zoning**

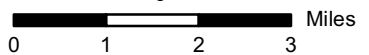
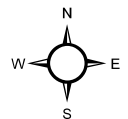
- Exclusive Farm Use (A-1)
  - Rural Residential
  - Urban
- Sherman County Zoning**
- Agriculture
  - Natural Resource
  - Rural Commercial
  - Rural Industrial
  - Rural Residential

**Klickitat County Zoning**

- Single Family Residential
- Suburban Residential
- Rural Residential
- General Rural
- Rural Center
- Open Space
- Forest Resource
- Extensive Agriculture

**Extensive Agriculture - Cluster**

- General Commercial
- Tourist Commercial
- General Industrial
- Industrial Park
- Public
- Airport Development
- Non-County Lands
- Energy Overlay Zone



**Map 5-1. County Zoning**