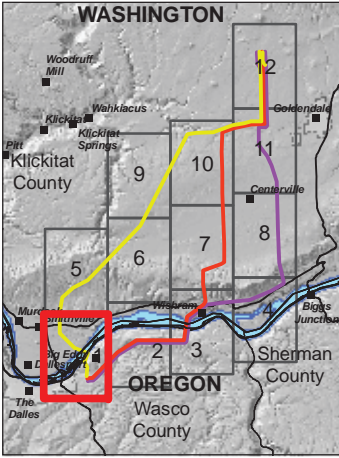
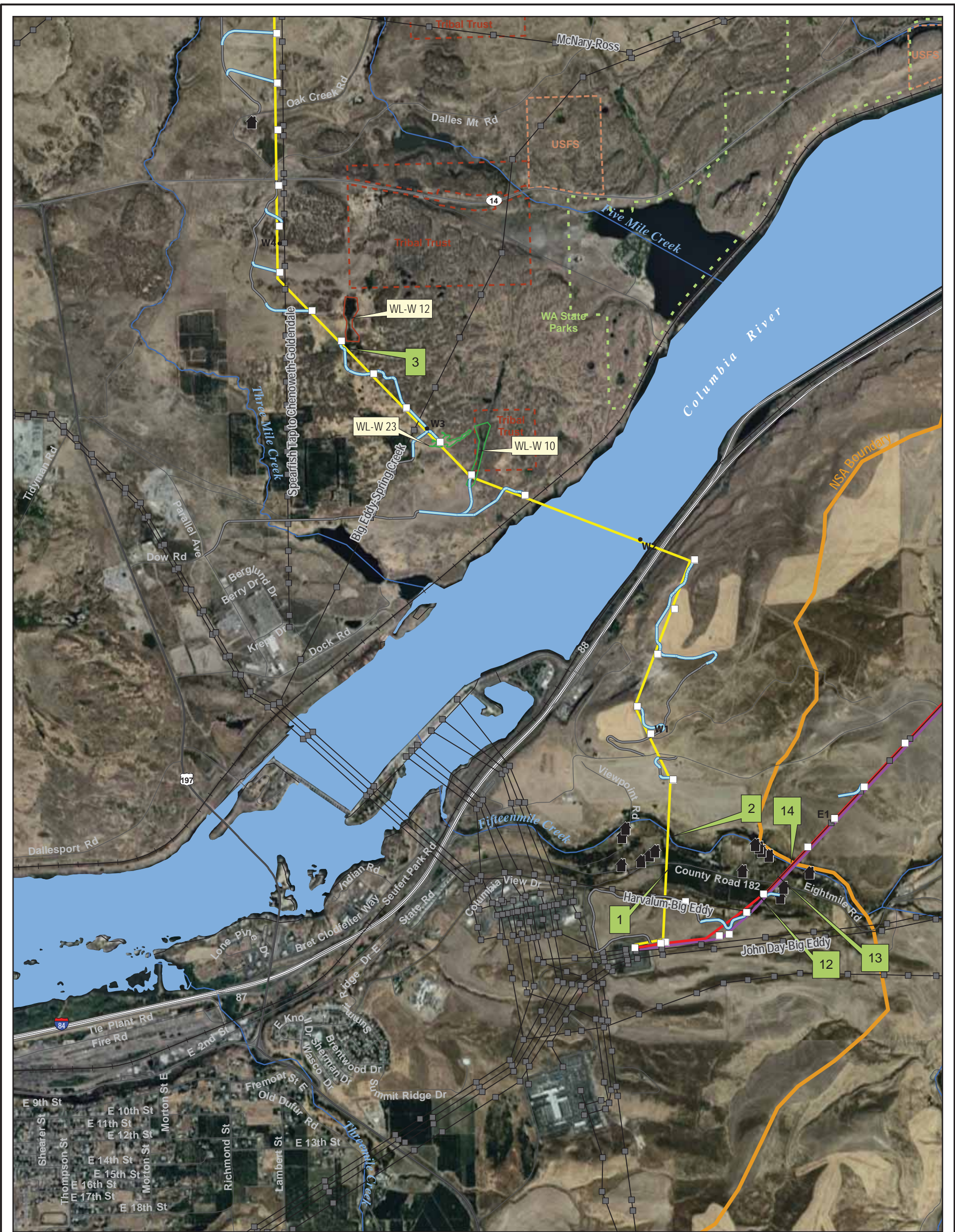


**Appendix B**  
**Aerial Photomap Series**

---





**Existing Facilities**

- ▲ BPA Substation
- BPA Tower
- BPA Transmission Line
- Railroad
- 🏠 House/Business (Within about 800' of the Alternative)
- ⊙ Wind Turbine
- 📏 Columbia River Gorge National Scenic Area

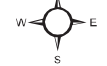
**Proposed Facilities**

- 🟡 West Alternative
- 🔴 Middle Alternative
- 🟠 East Alternative
- ⋯ Potential Route Adjustment
- Proposed Tower
- Line Mile Marker
- 🔴 Proposed Knight Substation Site

**Proposed Access Roads**

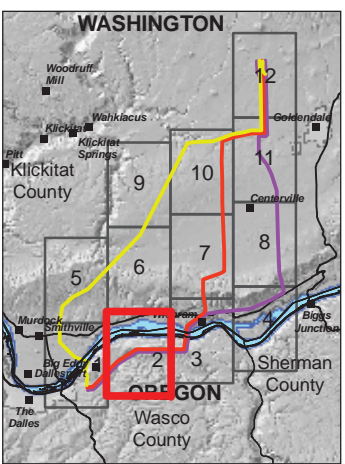
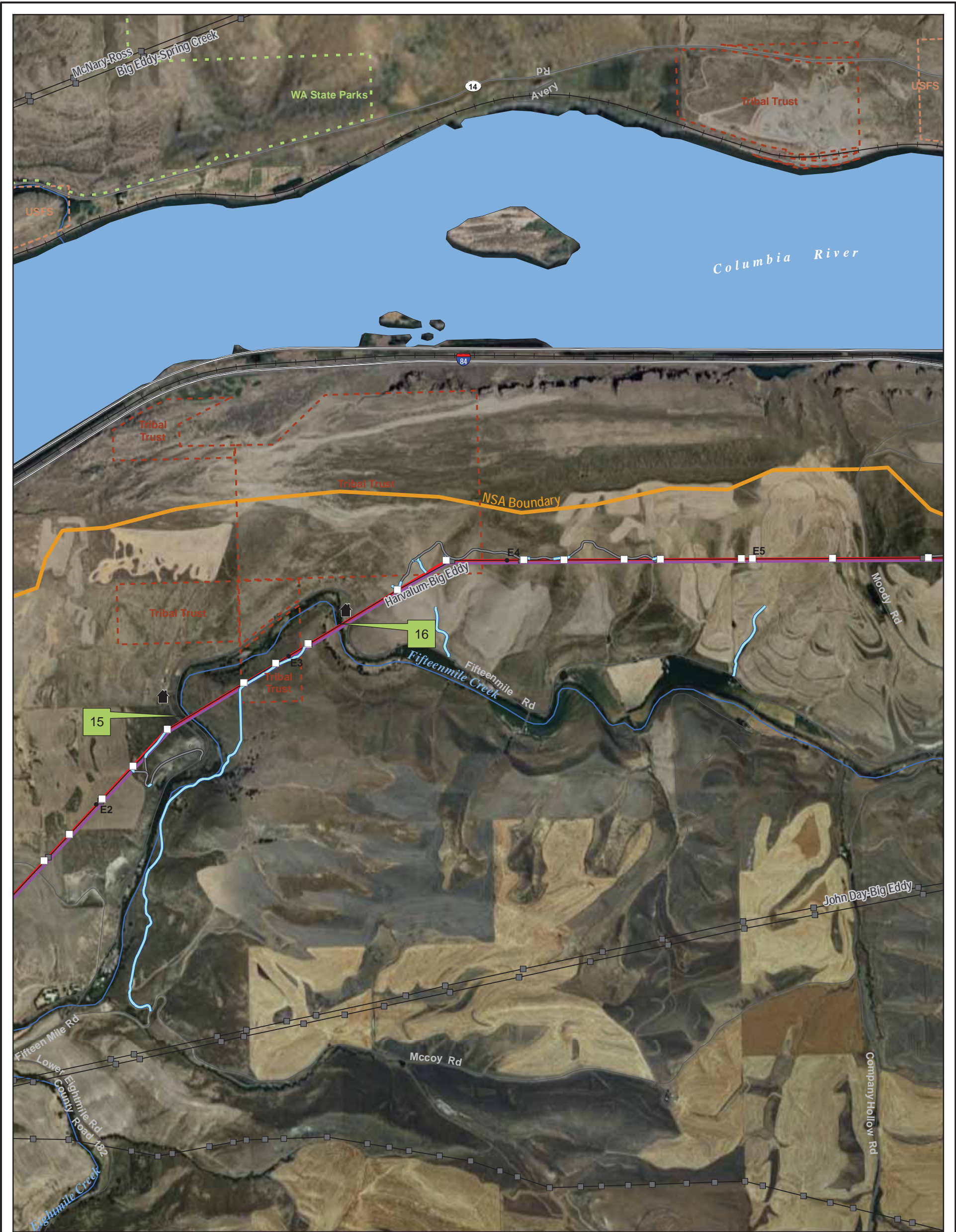
- 🟢 New Road
- Existing County Road Upgrade
- Existing Access Road Upgrade
- 🟠 Temporary Road
- Wetland Survey
- 🟢 Confirmed Wetland\*
- 🔴 Unverified Wetland\*

Wetland id Potentially Impacted Wetland  
 Woodland #



\*Wetlands may be larger than depicted extending beyond the right-of-way.

**Map B-1. Aerial Photomap Series**



**Existing Facilities**

- ▲ BPA Substation
- BPA Tower
- BPA Transmission Line
- Railroad
- 🏠 House/Business (Within about 800' of the Alternative)
- ⦿ Wind Turbine
- 📏 Columbia River Gorge National Scenic Area

**Proposed Facilities**

- West Alternative
- Middle Alternative
- East Alternative
- - - Potential Route Adjustment
- Proposed Tower
- Line Mile Marker
- 📏 Proposed Knight Substation Site

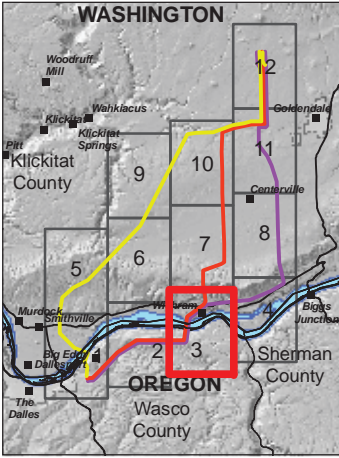
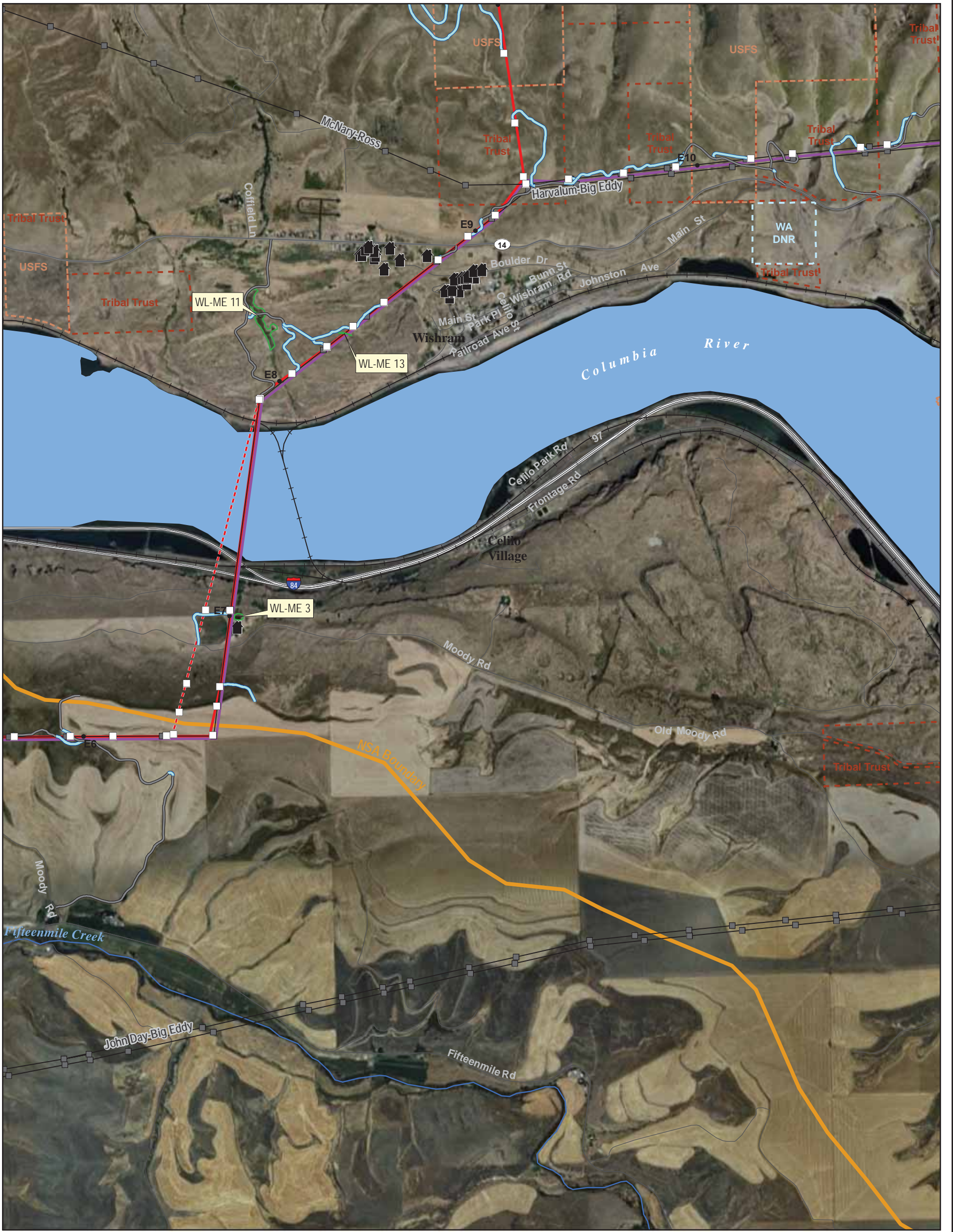
**Proposed Access Roads**

- New Road
- Existing County Road Upgrade
- Existing Access Road Upgrade
- Temporary Road
- Wetland Survey
- 🟩 Confirmed Wetland\*
- 🟪 Unverified Wetland\*
- 🟨 Potentially Impacted Wetland
- 🟩 Woodland #

\*Wetlands may be larger than depicted extending beyond the right-of-way.



**Map B-2. Aerial Photomap Series**



**Existing Facilities**

- ▲ BPA Substation
- BPA Tower
- BPA Transmission Line
- + Railroad
- 🏠 House/Business (Within about 800' of the Alternative)
- ⦿ Wind Turbine
- 📏 Columbia River Gorge National Scenic Area

**Proposed Facilities**

- 🟡 West Alternative
- 🔴 Middle Alternative
- 🟠 East Alternative
- ⋯ Potential Route Adjustment
- Proposed Tower
- Line Mile Marker
- 🔴 Proposed Knight Substation Site

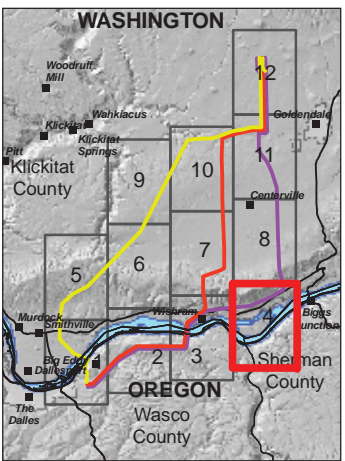
**Proposed Access Roads**

- 🟢 New Road
- Existing County Road Upgrade
- Existing Access Road Upgrade
- Temporary Road
- Wetland Survey
- 🟢 Confirmed Wetland\*
- 🔴 Unverified Wetland\*

Wetland id Potentially Impacted Wetland  
 Woodland #

\*Wetlands may be larger than depicted extending beyond the right-of-way.

**Map B-3. Aerial Photomap Series**



**Existing Facilities**

- ▲ BPA Substation
- BPA Tower
- BPA Transmission Line
- Railroad
- 🏠 House/Business (Within about 800' of the Alternative)
- ⊙ Wind Turbine
- 🟡 Columbia River Gorge National Scenic Area

**Proposed Facilities**

- West Alternative
- Middle Alternative
- East Alternative
- - - Potential Route Adjustment
- Proposed Tower
- Line Mile Marker
- 🔴 Proposed Knight Substation Site

**Proposed Access Roads**

- New Road
- Existing County Road Upgrade
- Existing Access Road Upgrade
- Temporary Road

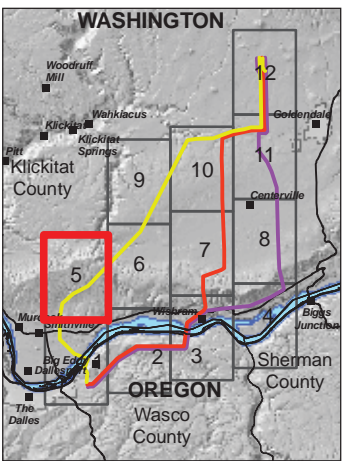
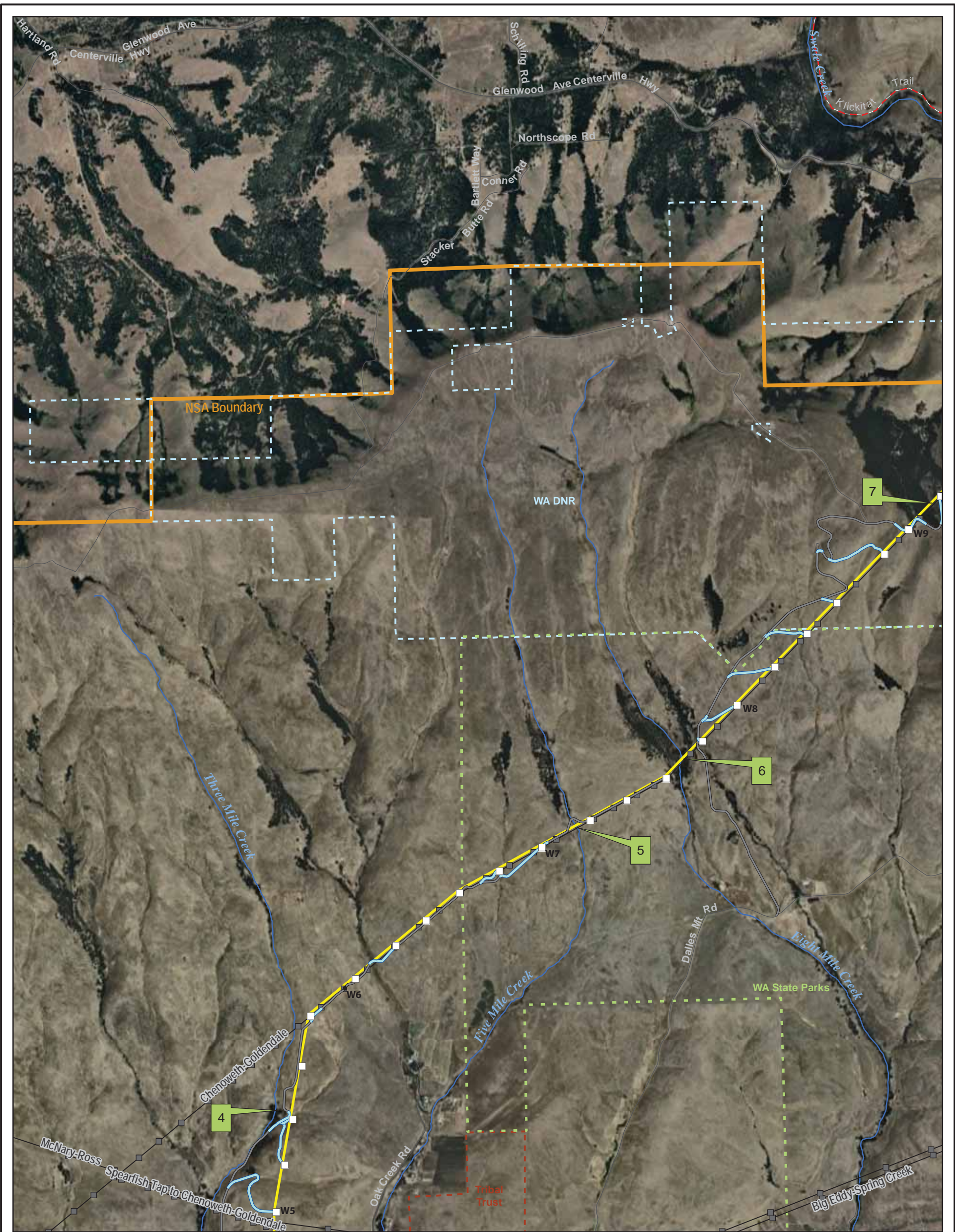
- Wetland Survey**
- 🟢 Confirmed Wetland\*
  - 🔴 Unverified Wetland\*
  - 🟡 Potentially Impacted Wetland
  - 🟠 Woodland #

\*Wetlands may be larger than depicted extending beyond the right-of-way.



**Map B-4. Aerial Photomap Series**

K:\Seattle\PROJECTS\BPA\00588\_09\_BigEddy\2010\MapDocs\Figures\BPA\_VisRes12sh\_GN.mxd



**Existing Facilities**

- ▲ BPA Substation
- BPA Tower
- BPA Transmission Line
- Railroad
- 🏠 House/Business (Within about 800' of the Alternative)
- ⊙ Wind Turbine
- 📏 Columbia River Gorge National Scenic Area

**Proposed Facilities**

- West Alternative
- Middle Alternative
- East Alternative
- - - Potential Route Adjustment
- Proposed Tower
- Line Mile Marker
- 📏 Proposed Knight Substation Site

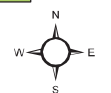
**Proposed Access Roads**

- New Road
- Existing County Road Upgrade
- Existing Access Road Upgrade
- Temporary Road
- Wetland Survey
- 🟩 Confirmed Wetland\*
- 🟪 Unverified Wetland\*

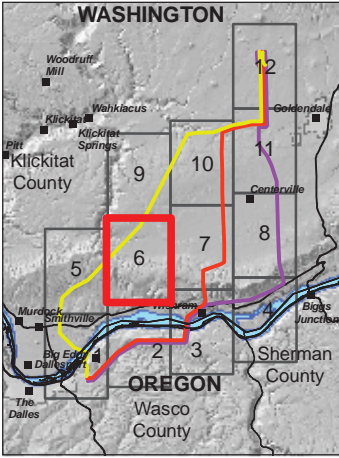
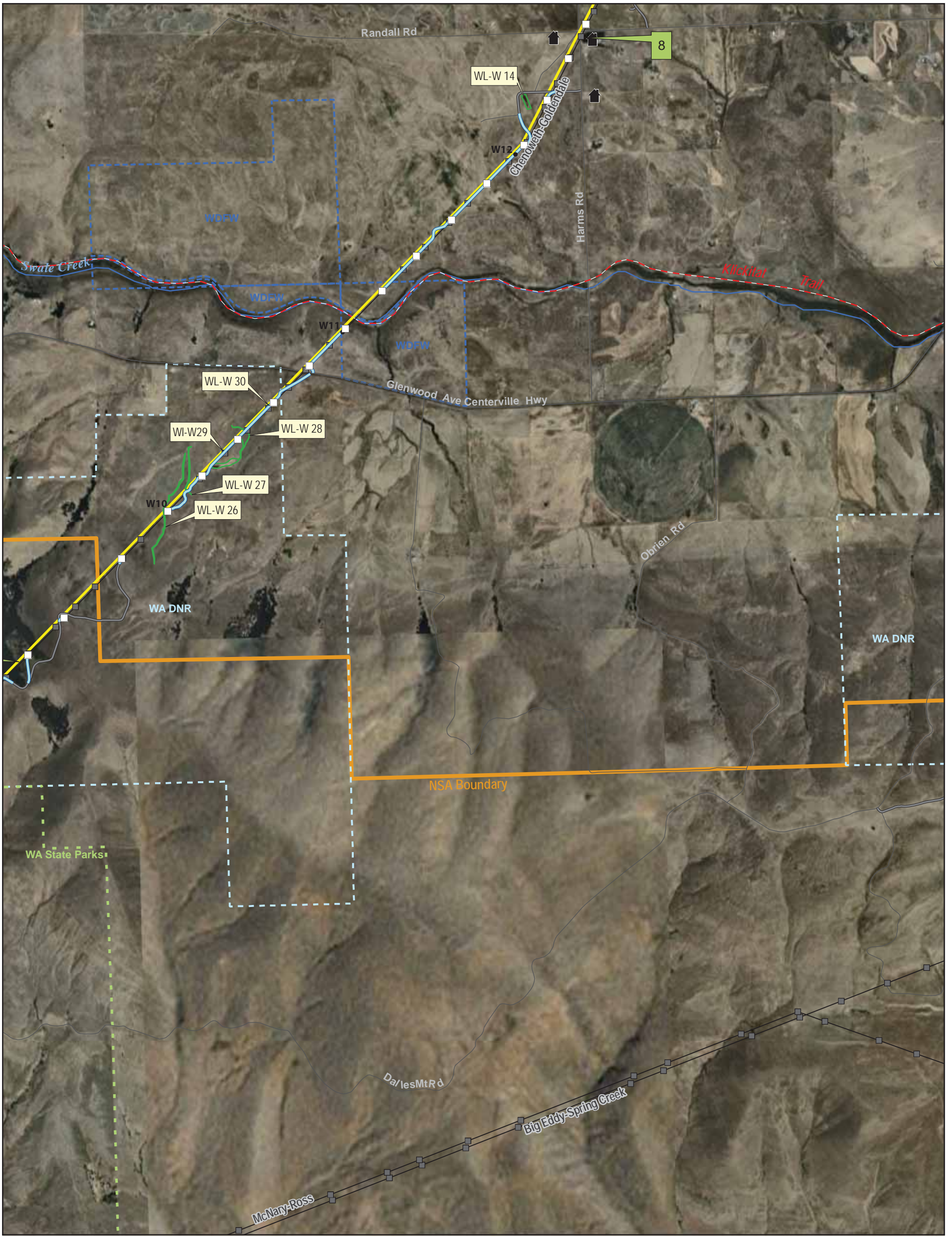
Wetland id Potentially Impacted Wetland

Woodland #

\*Wetlands may be larger than depicted extending beyond the right-of-way.



**Map B-5. Aerial Photomap Series**



**Existing Facilities**

- ▲ BPA Substation
- BPA Tower
- BPA Transmission Line
- Railroad
- 🏠 House/Business (Within about 800' of the Alternative)
- ⊙ Wind Turbine
- 📏 Columbia River Gorge National Scenic Area

**Proposed Facilities**

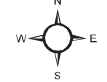
- 🟡 West Alternative
- 🔴 Middle Alternative
- 🟣 East Alternative
- ⋯ Potential Route Adjustment
- Proposed Tower
- Line Mile Marker
- 🔴 Proposed Knight Substation Site

**Proposed Access Roads**

- 🟢 New Road
- Existing County Road Upgrade
- Existing Access Road Upgrade
- Temporary Road

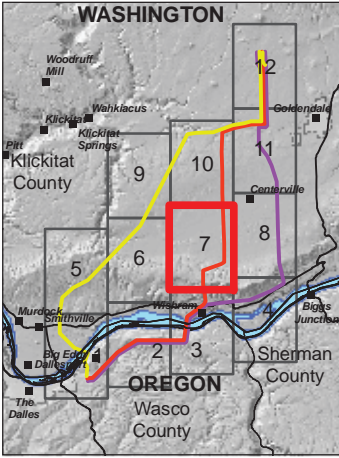
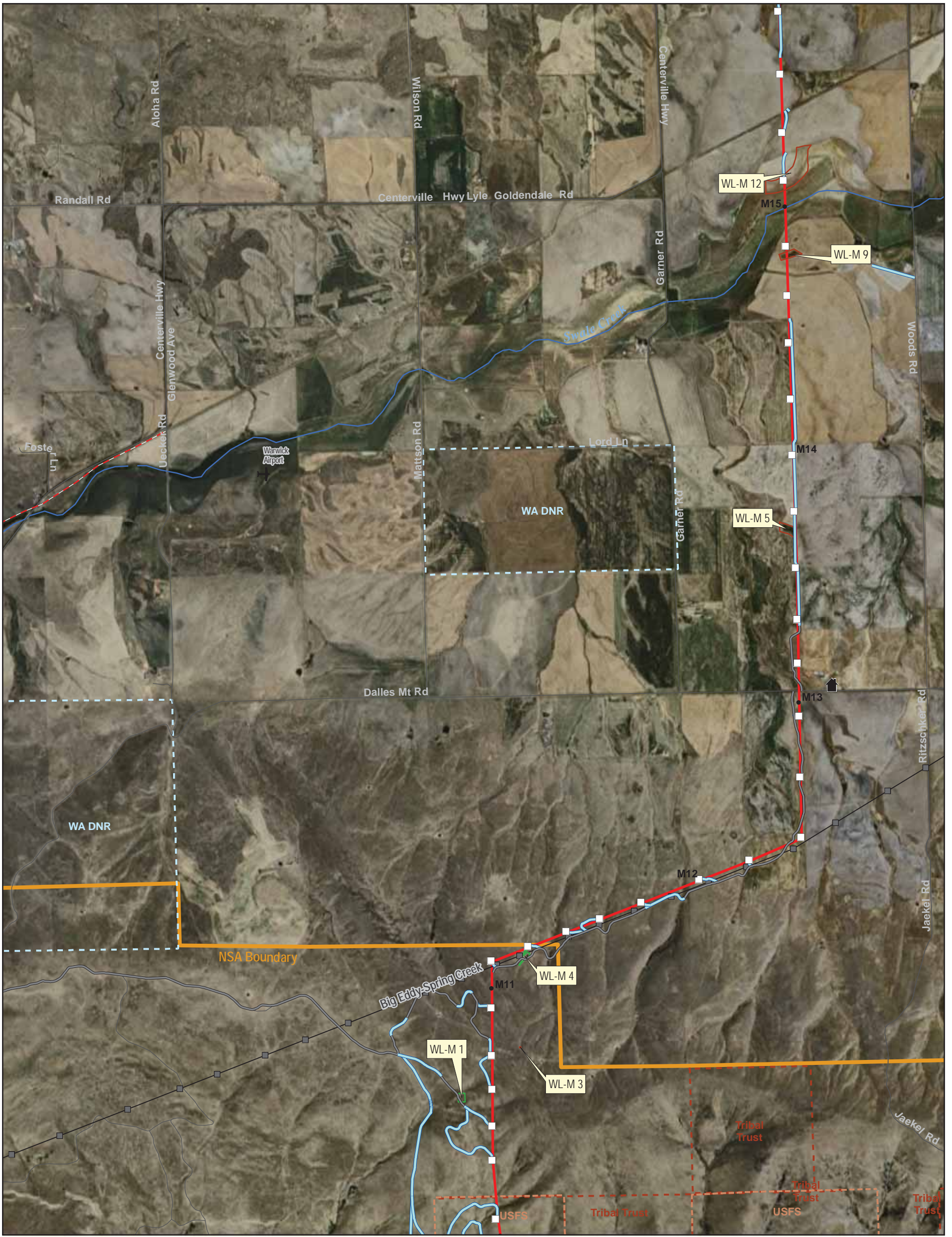
- Wetland Survey**
- 🟢 Confirmed Wetland\*
  - 🔴 Unverified Wetland\*
  - 🟡 Wetland id
  - 🟢 Woodland #

\*Wetlands may be larger than depicted extending beyond the right-of-way.



**Map B-6. Aerial Photomap Series**





**Existing Facilities**

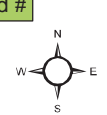
- ▲ BPA Substation
- BPA Tower
- BPA Transmission Line
- Railroad
- 🏠 House/Business (Within about 800' of the Alternative)
- ⊙ Wind Turbine
- 📏 Columbia River Gorge National Scenic Area

**Proposed Facilities**

- 🟡 West Alternative
- 🔴 Middle Alternative
- 🟠 East Alternative
- ⋯ Potential Route Adjustment
- Proposed Tower
- Line Mile Marker
- 🔴 Proposed Knight Substation Site

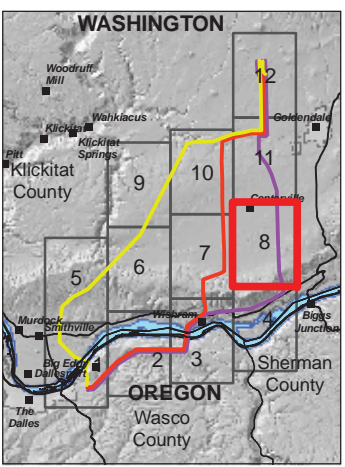
**Proposed Access Roads**

- 🟢 New Road
- Existing County Road Upgrade
- Existing Access Road Upgrade
- Temporary Road
- Wetland Survey
- 🟢 Confirmed Wetland\*
- 🔴 Unverified Wetland\*
- 🟡 Potentially Impacted Wetland
- 🟢 Wetland #



\*Wetlands may be larger than depicted extending beyond the right-of-way.

**Map B-7. Aerial Photomap Series**



**Existing Facilities**

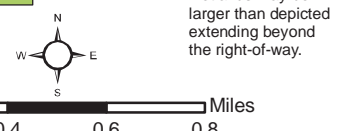
- ▲ BPA Substation
- BPA Tower
- BPA Transmission Line
- Railroad
- 🏠 House/Business (Within about 800' of the Alternative)
- ⊙ Wind Turbine
- 📐 Columbia River Gorge National Scenic Area

**Proposed Facilities**

- West Alternative
- Middle Alternative
- East Alternative
- - - Potential Route Adjustment
- Proposed Tower
- Line Mile Marker
- 📐 Proposed Knight Substation Site

**Proposed Access Roads**

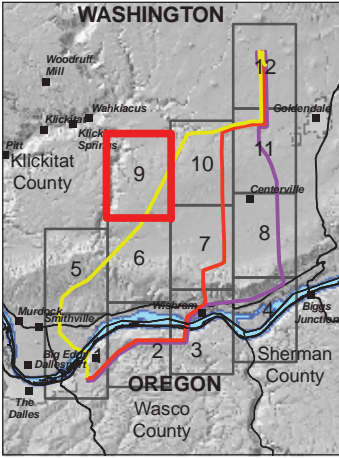
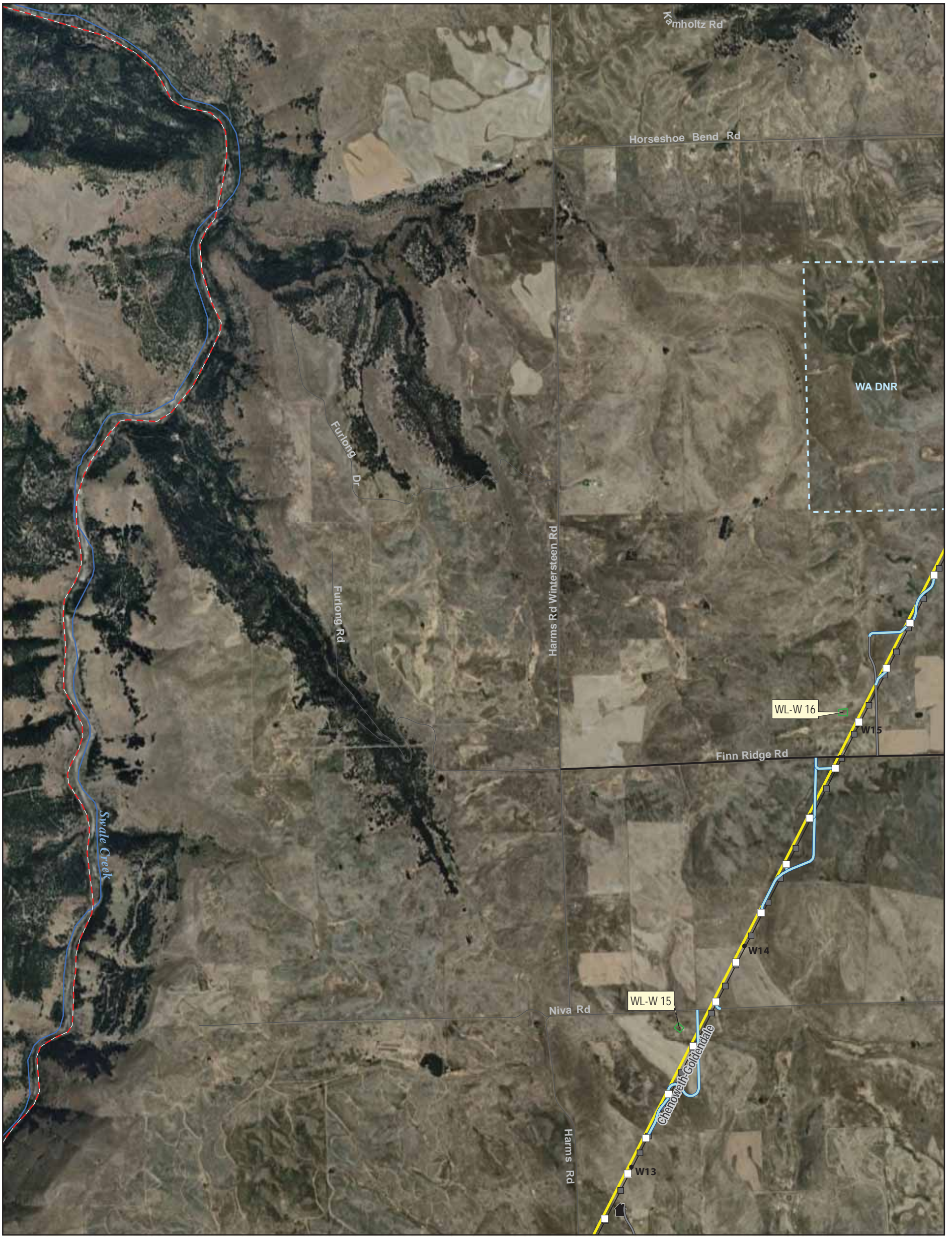
- New Road
- Existing County Road Upgrade
- Existing Access Road Upgrade
- Temporary Road
- Wetland Survey
- 🟩 Confirmed Wetland\*
- 🟪 Unverified Wetland\*
- 🟨 Potentially Impacted Wetland
- 🟩 Woodland #



\*Wetlands may be larger than depicted extending beyond the right-of-way.

**Map B-8. Aerial Photomap Series**

K:\Seattle\PROJECTS\BPA\00588\_09\_BigEddy\2010\MapDocs\Figures\BPA\_VisRes12sh\_GN.mxd



**Existing Facilities**

- ▲ BPA Substation
- BPA Tower
- BPA Transmission Line
- Railroad
- 🏠 House/Business (Within about 800' of the Alternative)
- ⊙ Wind Turbine
- 📐 Columbia River Gorge National Scenic Area

**Proposed Facilities**

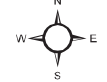
- West Alternative
- Middle Alternative
- East Alternative
- - - Potential Route Adjustment
- Proposed Tower
- Line Mile Marker
- 📐 Proposed Knight Substation Site

**Proposed Access Roads**

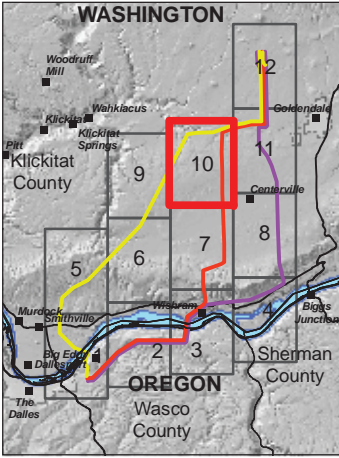
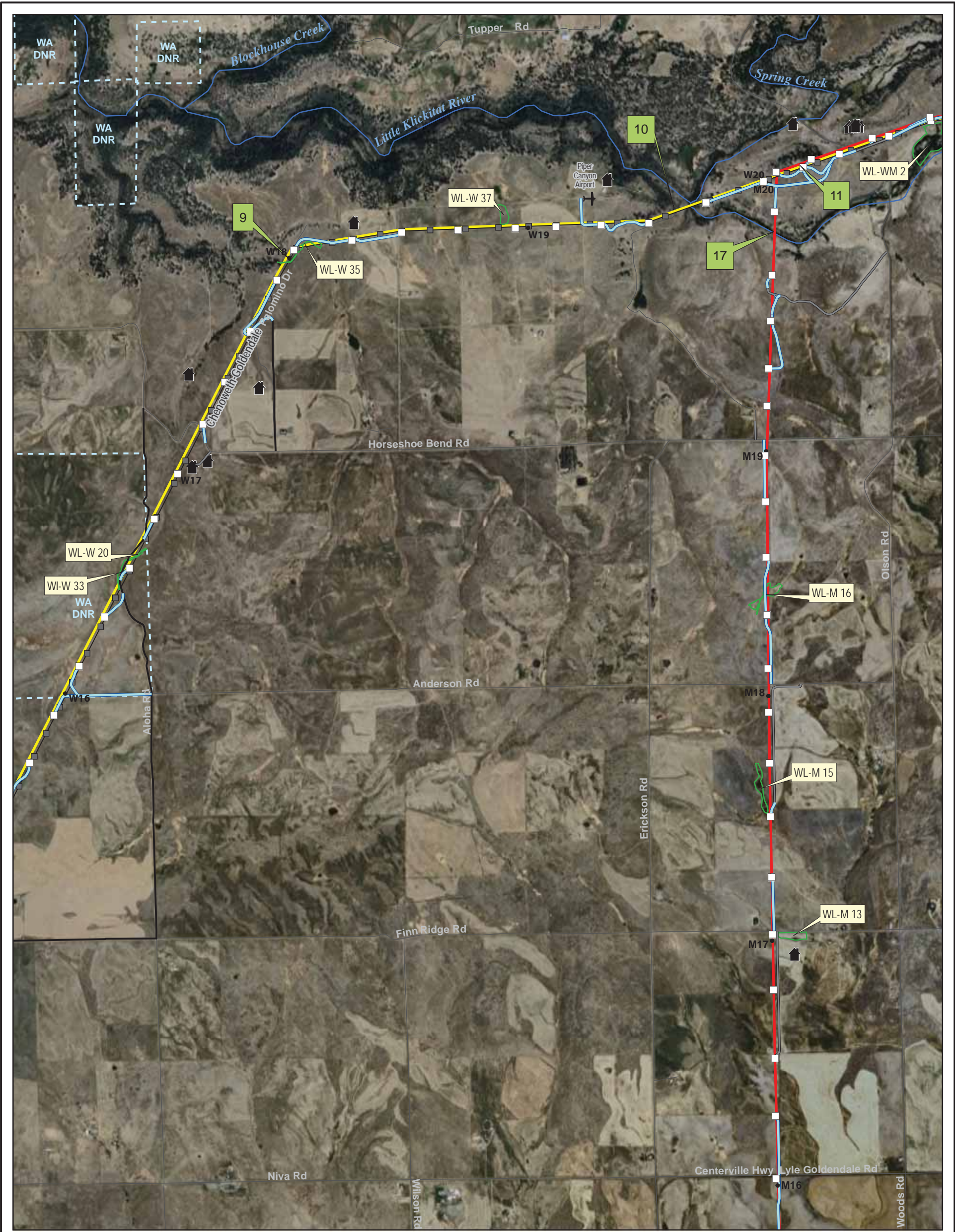
- New Road
- Existing County Road Upgrade
- Existing Access Road Upgrade
- Temporary Road

- Wetland Survey**
- 🟩 Confirmed Wetland\*
  - 🟨 Unverified Wetland\*
  - 🟨 Potentially Impacted Wetland
  - 🟩 Woodland #

\*Wetlands may be larger than depicted extending beyond the right-of-way.



**Map B-9. Aerial Photomap Series**



**Existing Facilities**

- ▲ BPA Substation
- BPA Tower
- BPA Transmission Line
- + Railroad
- 🏠 House/Business (Within about 800' of the Alternative)
- ⊙ Wind Turbine
- 📏 Columbia River Gorge National Scenic Area

**Proposed Facilities**

- West Alternative
- Middle Alternative
- East Alternative
- - - Potential Route Adjustment
- Proposed Tower
- Line Mile Marker
- 📏 Proposed Knight Substation Site

**Proposed Access Roads**

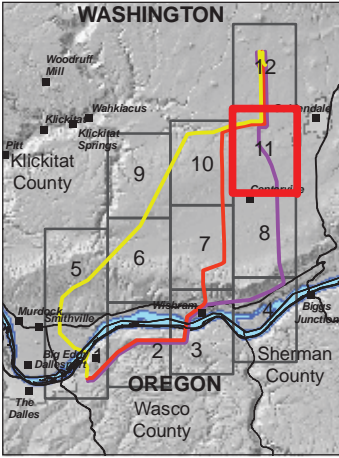
- New Road
- Existing County Road Upgrade
- Existing Access Road Upgrade
- Temporary Road
- Wetland Survey
- 🟩 Confirmed Wetland\*
- 🟨 Unverified Wetland\*
- 🟨 Wetland id
- 🟩 Woodland #

\*Wetlands may be larger than depicted extending beyond the right-of-way.



**Map B-10. Aerial Photomap Series**

K:\Seattle\PROJECTS\BPA\00588\_09\_BigEddy\2010\MapDocs\Figures\BPA\_VisRes12sh\_GN.mxd



**Existing Facilities**

- ▲ BPA Substation
- BPA Tower
- BPA Transmission Line
- Railroad
- 🏠 House/Business (Within about 800' of the Alternative)
- ⊙ Wind Turbine
- 📏 Columbia River Gorge National Scenic Area

**Proposed Facilities**

- West Alternative
- Middle Alternative
- East Alternative
- - - Potential Route Adjustment
- Proposed Tower
- Line Mile Marker
- 📏 Proposed Knight Substation Site

**Proposed Access Roads**

- New Road
- Existing County Road Upgrade
- Existing Access Road Upgrade
- Temporary Road

**Wetland Survey**

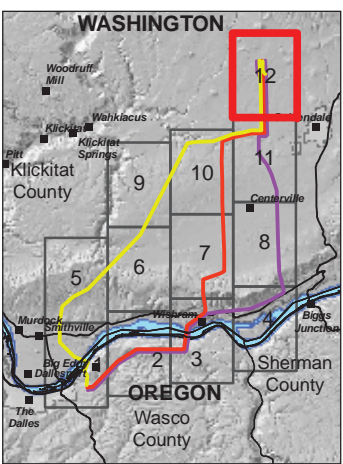
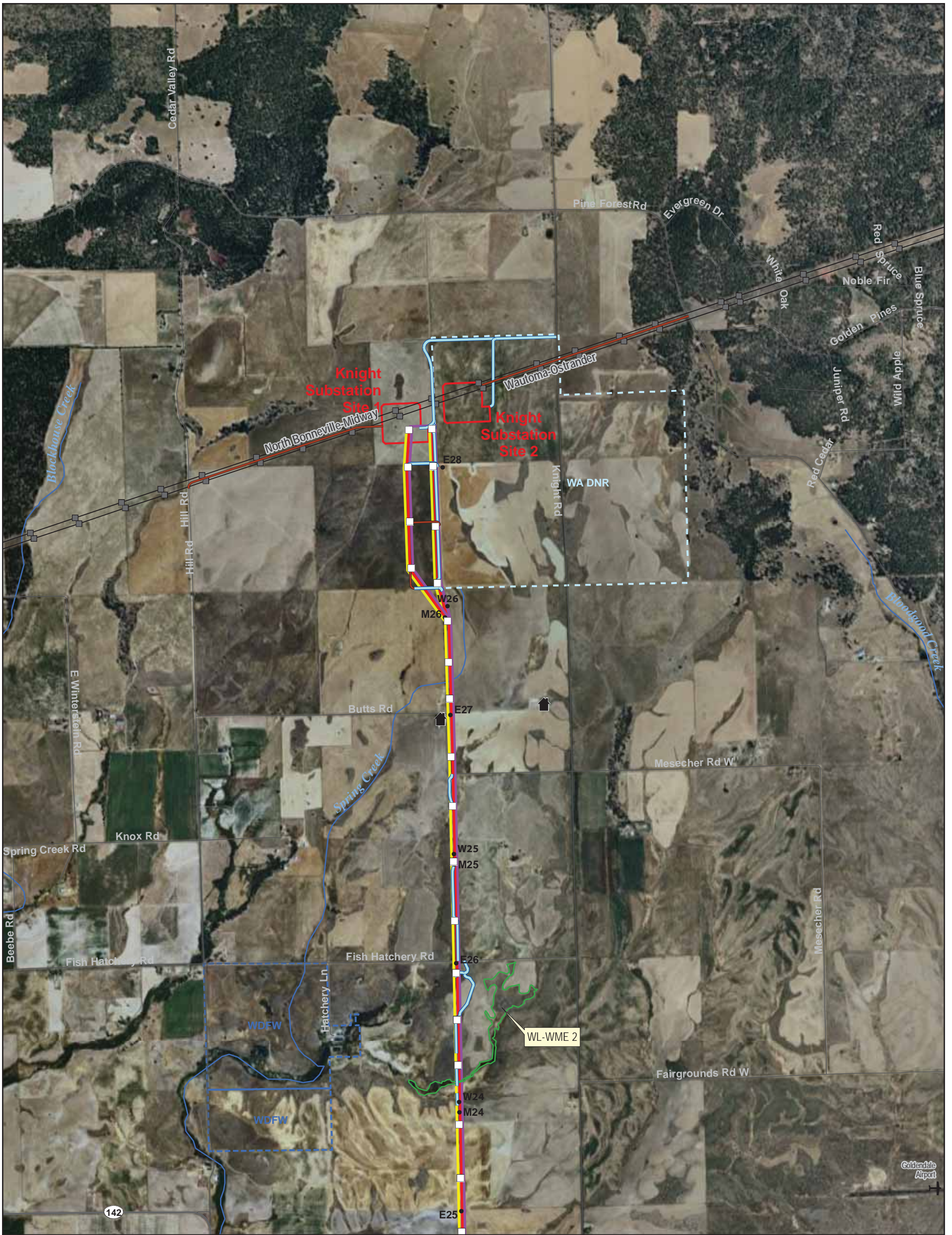
- 🟩 Confirmed Wetland\*
- 🟨 Unverified Wetland\*
- 🟨 Wetland id
- 🟩 Potentially Impacted Wetland
- 🟩 Woodland #

\*Wetlands may be larger than depicted extending beyond the right-of-way.



**Map B-11. Aerial Photomap Series**

K:\Seattle\PROJECTS\BPA\0588\_09\_BigEddy\2010\MapDocs\Figures\BPA\_VisRes12sh\_GN.mxd



**Existing Facilities**

- ▲ BPA Substation
- BPA Tower
- BPA Transmission Line
- Railroad
- 🏠 House/Business (Within about 800' of the Alternative)
- Wind Turbine
- 📏 Columbia River Gorge National Scenic Area

**Proposed Facilities**

- West Alternative
- Middle Alternative
- East Alternative
- - - Potential Route Adjustment
- Proposed Tower
- Line Mile Marker
- 📏 Proposed Knight Substation Site

**Proposed Access Roads**

- New Road
- Existing County Road Upgrade
- Existing Access Road Upgrade
- Temporary Road
- Wetland Survey
- 🟩 Confirmed Wetland\*
- 🟪 Unverified Wetland\*

Wetland id Potentially Impacted Wetland

Woodland #

\*Wetlands may be larger than depicted extending beyond the right-of-way.

