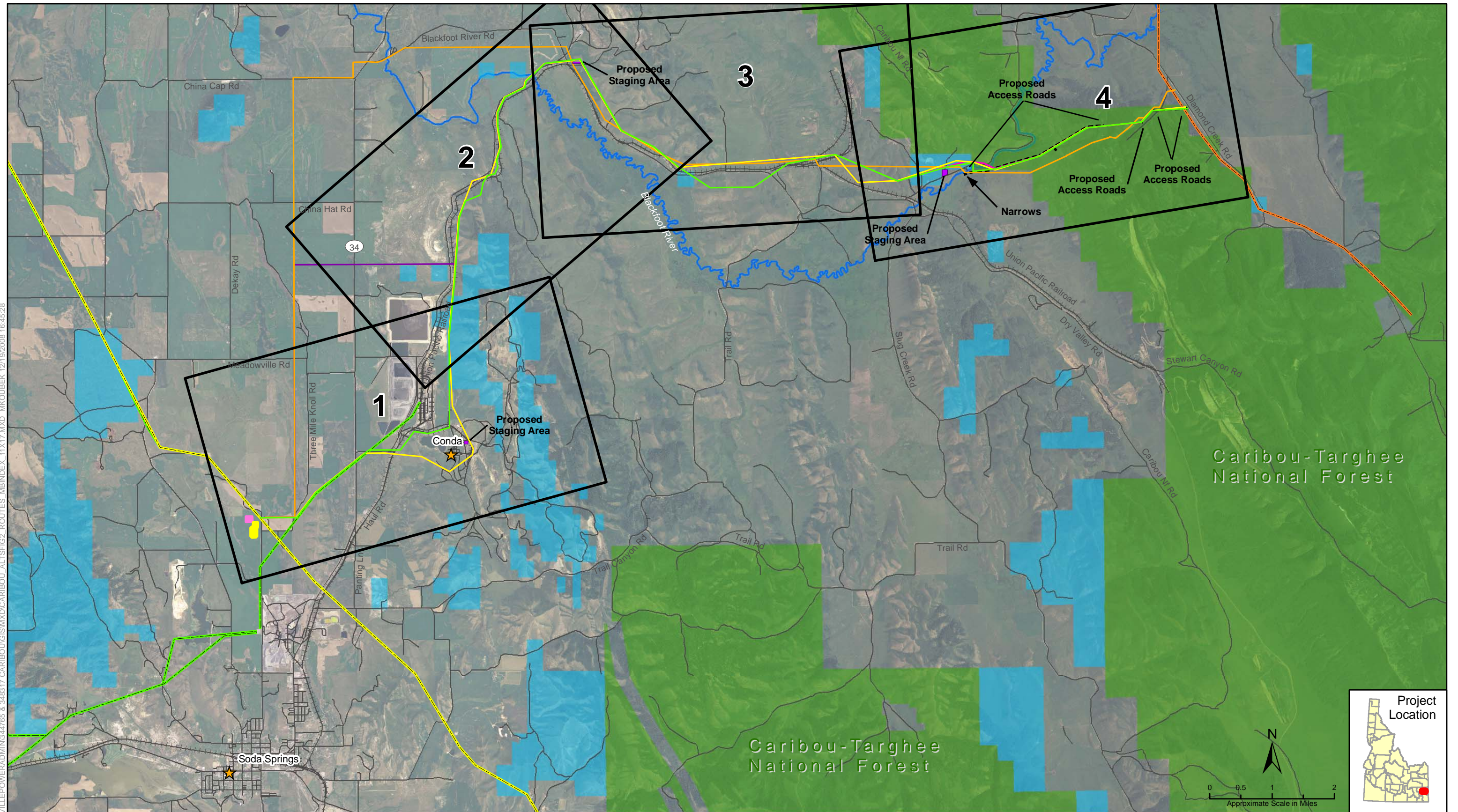


BOI:\NOW\PROJ\BOONNEVILLE\POWERADMIN\344765 & 348317\CARIBOU\GIS\MXD\CARIBOU\_ALT\FIG2\_ROUTES\_MINDEX\_11X17.MXD MKOUBEK 12/19/2008 16:45:28

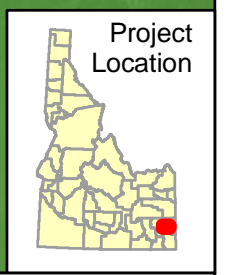


**Legend**

Proposed Action	Alternative 4	Proposed BPA Substation	Road	Bureau of Land Management
Alternative 1	Existing PacifiCorp Powerline	PacifiCorp Substation	Railroad	US Forest Service
Alternative 2	Existing LVE Powerline	Proposed Staging Area	River	
Alternative 3	Existing BPA Powerline	Proposed Access Road		

**Notes:**  
 1. Alternative 2 follows Alternative 1 except in the area of the Narrows.  
 2. Alternative 4 follows Alternative 3 until it cuts across to follow Alternative 1.

Hooper Springs-Lower Valley Transmission Line  
 Figure 2 Map Book Index  
 Proposed Action & Alternatives

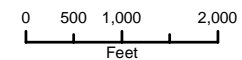
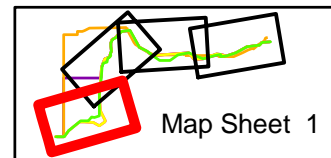


BOI:\NOW\PROJ\BOONNEVILLE\POWERADMIN\344765 & 348317\CARIBOU\GIS\MXD\CARIBOU\_ALTSFIG2\_ROUTES.MXD 11X17.MXD MKOUBEK 12/19/2008 16:13:46



**Legend**

- |                   |                                  |                           |             |                             |
|-------------------|----------------------------------|---------------------------|-------------|-----------------------------|
| — Proposed Action | — Alternative 4                  | ■ Proposed BPA Substation | — Road      | ■ Bureau of Land Management |
| — Alternative 1   | — Existing Pacificcorp Powerline | ■ Pacificcorp Substation  | ++ Railroad | ■ US Forest Service         |
| — Alternative 2   | — Existing LVE Powerline         | ■ Proposed Staging Area   | — River     |                             |
| — Alternative 3   | — Existing BPA Powerline         | — Proposed Access Road    |             |                             |



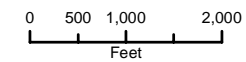
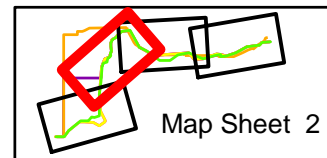
Hooper Springs-Lower Valley Transmission Line  
Figure 2 Map Sheet 1  
Proposed Action & Alternatives

BOI:\NOW\PROJ\BOONNEVILLEPOWERADMIN\344765 & 348317\CARIBOU\GIS\MXD\CARIBOU\_ALT\FIG2\_ROUTES\_MIB\_11X17.MXD MKOUBEK 12/19/2008 16:13:46



**Legend**

- |                   |                                 |                           |              |                             |
|-------------------|---------------------------------|---------------------------|--------------|-----------------------------|
| — Proposed Action | — Alternative 4                 | ■ Proposed BPA Substation | — Road       | ■ Bureau of Land Management |
| — Alternative 1   | — Existing PacifiCorp Powerline | ■ PacifiCorp Substation   | +++ Railroad | ■ US Forest Service         |
| — Alternative 2   | — Existing LVE Powerline        | ■ Proposed Staging Area   | — River      |                             |
| — Alternative 3   | — Existing BPA Powerline        | — Proposed Access Road    |              |                             |



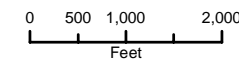
Hooper Springs-Lower Valley Transmission Line  
Figure 2 Map Sheet 2  
Proposed Action & Alternatives

BOI:\NOW\PROJ\BOONNEVILLE\POWERADMIN\344765 & 348317\CARIBOU\GIS\MXD\CARIBOU\_ALTSFIG2.ROUTES.MXD 11X17.MXD MKOUBEK 12/19/2008 16:13:46



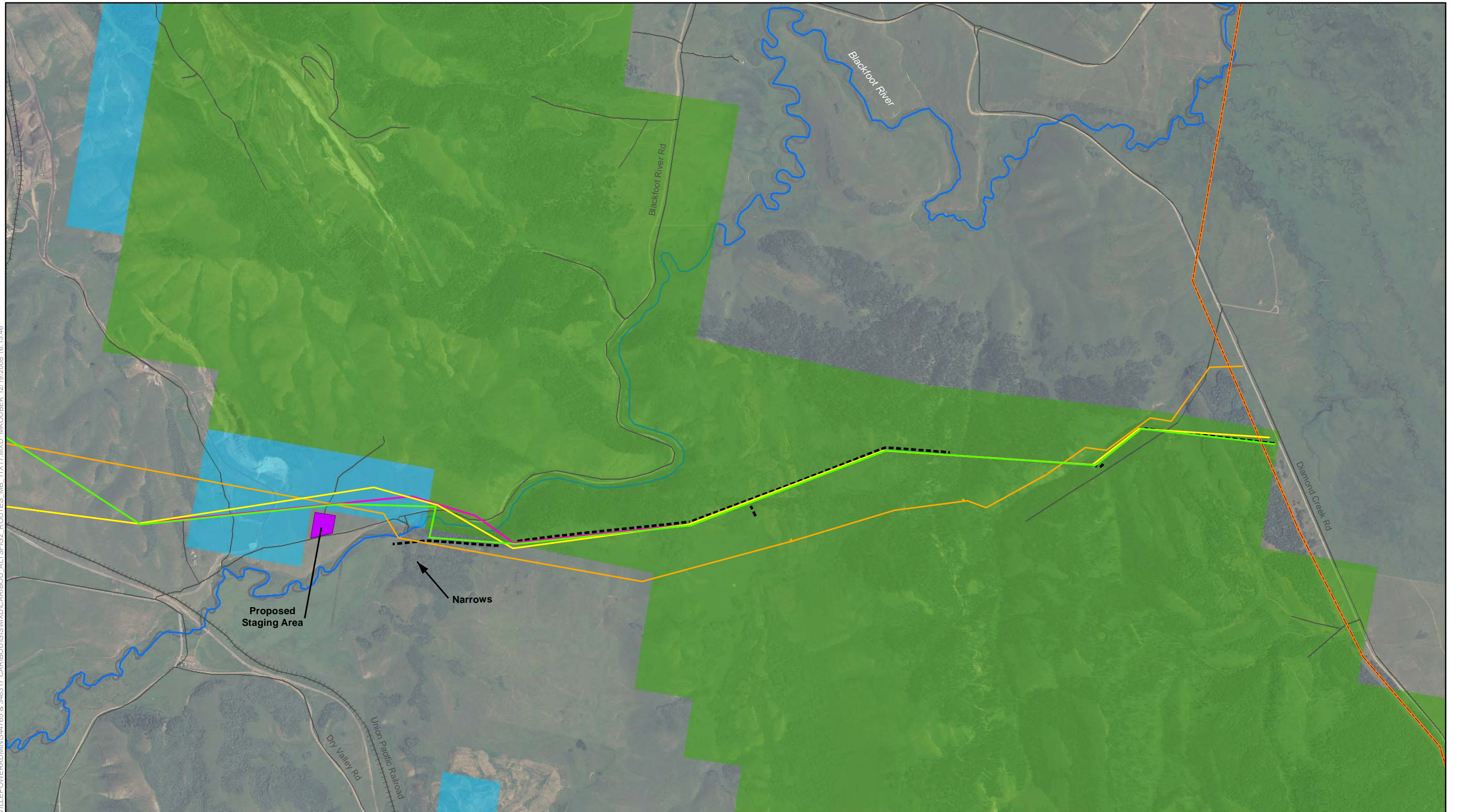
**Legend**

- |                   |                                 |                           |             |                             |
|-------------------|---------------------------------|---------------------------|-------------|-----------------------------|
| — Proposed Action | — Alternative 4                 | ■ Proposed BPA Substation | — Road      | ■ Bureau of Land Management |
| — Alternative 1   | — Existing PacifiCorp Powerline | ■ PacifiCorp Substation   | ++ Railroad | ■ US Forest Service         |
| — Alternative 2   | — Existing LVE Powerline        | ■ Proposed Staging Area   | — River     |                             |
| — Alternative 3   | — Existing BPA Powerline        | — Proposed Access Road    |             |                             |



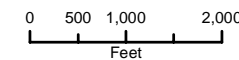
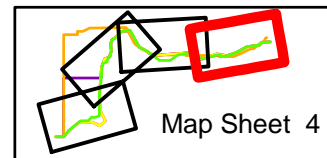
Hooper Springs-Lower Valley Transmission Line  
 Figure 2 Map Sheet 3  
 Proposed Action & Alternatives

BOI:\NOW\PROJ\BOONNEVILLE\POWERADMIN\344765 & 348317\CARIBOU\GIS\MXD\CARIBOU\_ALT\FIG2\_ROUTES\_MIB\_11X17.MXD MKOUBEK 12/19/2008 16:13:46



**Legend**

- |                   |                                 |                           |              |                             |
|-------------------|---------------------------------|---------------------------|--------------|-----------------------------|
| — Proposed Action | — Alternative 4                 | ■ Proposed BPA Substation | — Road       | ■ Bureau of Land Management |
| — Alternative 1   | — Existing PacifiCorp Powerline | ■ PacifiCorp Substation   | +++ Railroad | ■ US Forest Service         |
| — Alternative 2   | — Existing LVE Powerline        | ■ Proposed Staging Area   | — River      |                             |
| — Alternative 3   | — Existing BPA Powerline        | — Proposed Access Road    |              |                             |



Hooper Springs-Lower Valley Transmission Line  
Figure 2 Map Sheet 4  
Proposed Action & Alternatives