

AGENDA – April 5st

Sales Data

CBSA Update

National Accounts



ETHAN

MANTHEY

HELLO

my name is



ETHAN

MANTHEY

SALES

DATA



HVAC Lighting

Regional

```
graph TD; Regional[Regional] --- Division[Division]; Division --- Branch1[Branch]; Division --- Branch2[Branch]; Division --- Branch3[Branch]; Division --- Branch4[Branch];
```

Division

Branch

Branch

Branch

Branch



Regional

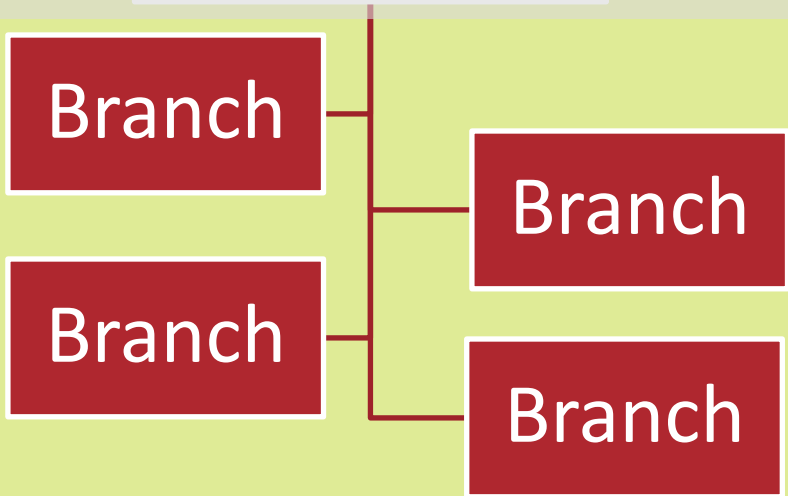
Division

Branch

Branch

Branch

Branch




```
graph TD; Regional[Regional] --- Division[Division]; Division --- Branch1[Branch]; Division --- Branch2[Branch]; Division --- Branch3[Branch]; Division --- Branch4[Branch];
```

Regional

Division

Branch

Branch

Branch

Branch

Qs?



Dulane Moran

NEEA



2017-19 CBSA Status Update

Dulane Moran

April 5, 2017



CBSA: Context

- Regional baseline stock study
 - Informs efficiency planning, market models, and provides inputs into load forecasts
- Regionally representative study + optional oversamples
- Multi-year, extensive data collection



Timeline: Phased Project

Phase I
Q4 2016 - August 2017

Phase II
August 2017 – December 2019



Regional Involvement

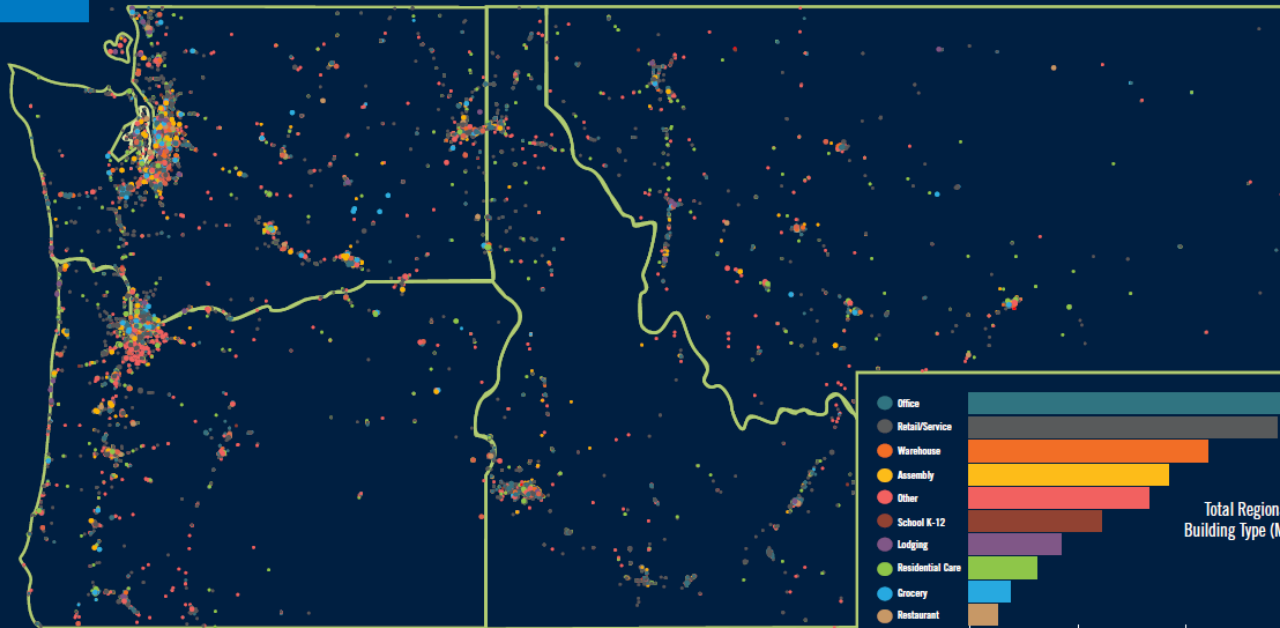
- Workgroups focused on sample design and building variables
- All resources and input tools available on Conduit:
- <https://conduitnw.org/Pages/Article.aspx?rid=1199>



Questions?



COMMERCIAL BUILDING LOCATIONS IN THE NORTHWEST



PACIFIC NORTHWEST

Total Population : 13 million

Total Number of Commercial Buildings*: 203,205

Total Floor Area : 3,122 million sq. ft.

Floor Area Heated by Electricity : 767 million sq. ft.

Floor Area Heated by Natural Gas : 1,782 million sq. ft.

* Number does not include Hospitals or University campuses, which were assessed separately.

The 2014 Commercial Building Stock Assessment (CBSA) gathered data from commercial sites across ten building types in Oregon, Washington, Idaho and Montana. The study represents the largest random sample of commercial buildings in the history of the Northwest. According to the data, commercial building floor area increased nearly 27 percent between 2009 and 2014. Over the same period electrical energy use per square foot decreased by about 11 percent, while natural gas use decreased by just under 15 percent.

NEEA.org/CBSA - pg 4

10101101
01101100
10110110

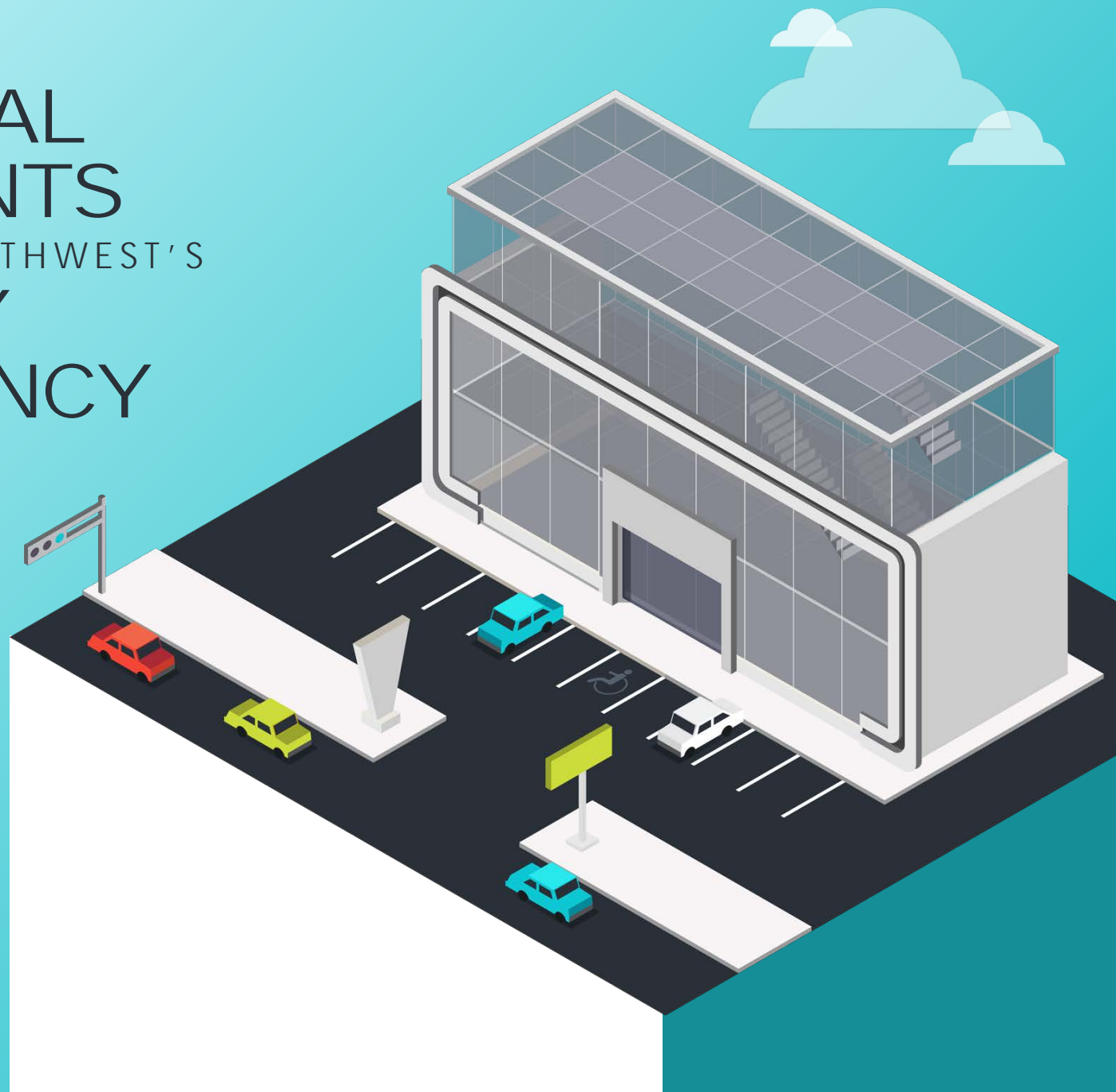


BONNIE

WATSON



MAKING
**NATIONAL
ACCOUNTS**
INTO THE NORTHWEST'S
**ENERGY
EFFICIENCY
ALLIES**



Bonneville
POWER ADMINISTRATION





NATIONAL ACCOUNT CUSTOMERS

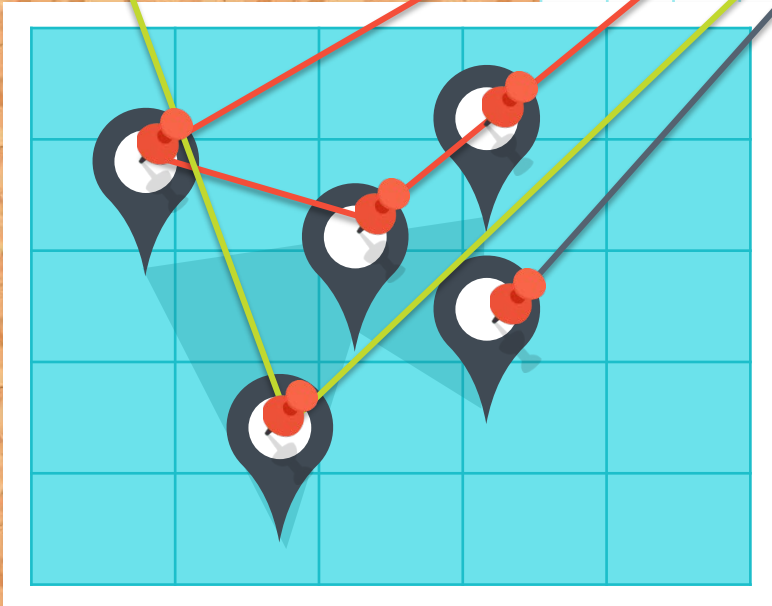
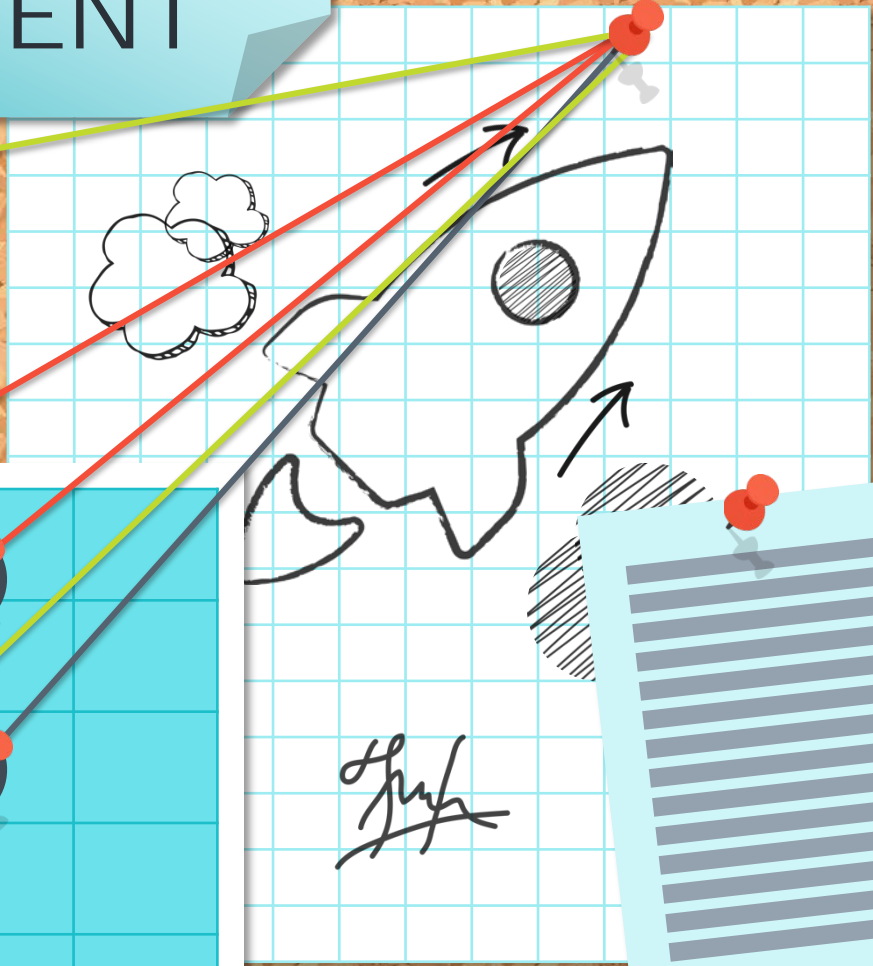


NATIONAL
ACCOUNTS ARE
DIFFERENT
FROM OTHER BUSINESSES



1

SOPHISTICATED MANAGEMENT





2

PURCHASING
POWER



EARLY
ADOPTERS



4 MANY INFLUENCERS AND DECISION MAKERS



Equipment Mfg & Sales



**Energy-Efficiency
Strategy & Project Mgmt**



Specification & Design



Distribution & Logistics



Project Implementation



Rebate Administration



COMPLEX DECISION- MAKING PROCESS

5



Project
ation

e
al

Roll-out
Prioritization

Implementation



COMPLEX DECISION- MAKING PROCESS



**Project
Initiation**



**Executive
Approval**



**Roll-out
Prioritization**



Implementation



COMPLEX DECISION- MAKING PROCESS



**Project
Initiation**



**Executive
Approval**



**Roll-out
Prioritization**



Implementation



COMPLEX DECISION- MAKING PROCESS



**Project
Initiation**



**Executive
Approval**



**Roll-out
Prioritization**



Implementation

COMPLEX DECISION- MAKING PROCESS



**Project
Initiation**



**Executive
Approval**



**Roll-out
Prioritization**



Implementation



SPECIALIZED SUPPLY CHAIN



Specialized
Distribution



Installation
Firms



Turnkey
Providers



SPECIALIZED SUPPLY CHAIN



**Specialized
Distributors**



**Installation
Firms**



**Turnkey
Providers**

SPECIALIZED SUPPLY CHAIN



**Specialized
Distributors**



**Installation
Firms**



**Turnkey
Providers**

SPECIALIZED SUPPLY CHAIN



**Specialized
Distributors**



**Installation
Firms**



**Turnkey
Providers**



HOW DO UTILITY PROGRAMS

FIT INTO THIS WORLD?





UTILITY
PROGRAMS
AFFECT
ROLL-OUTS

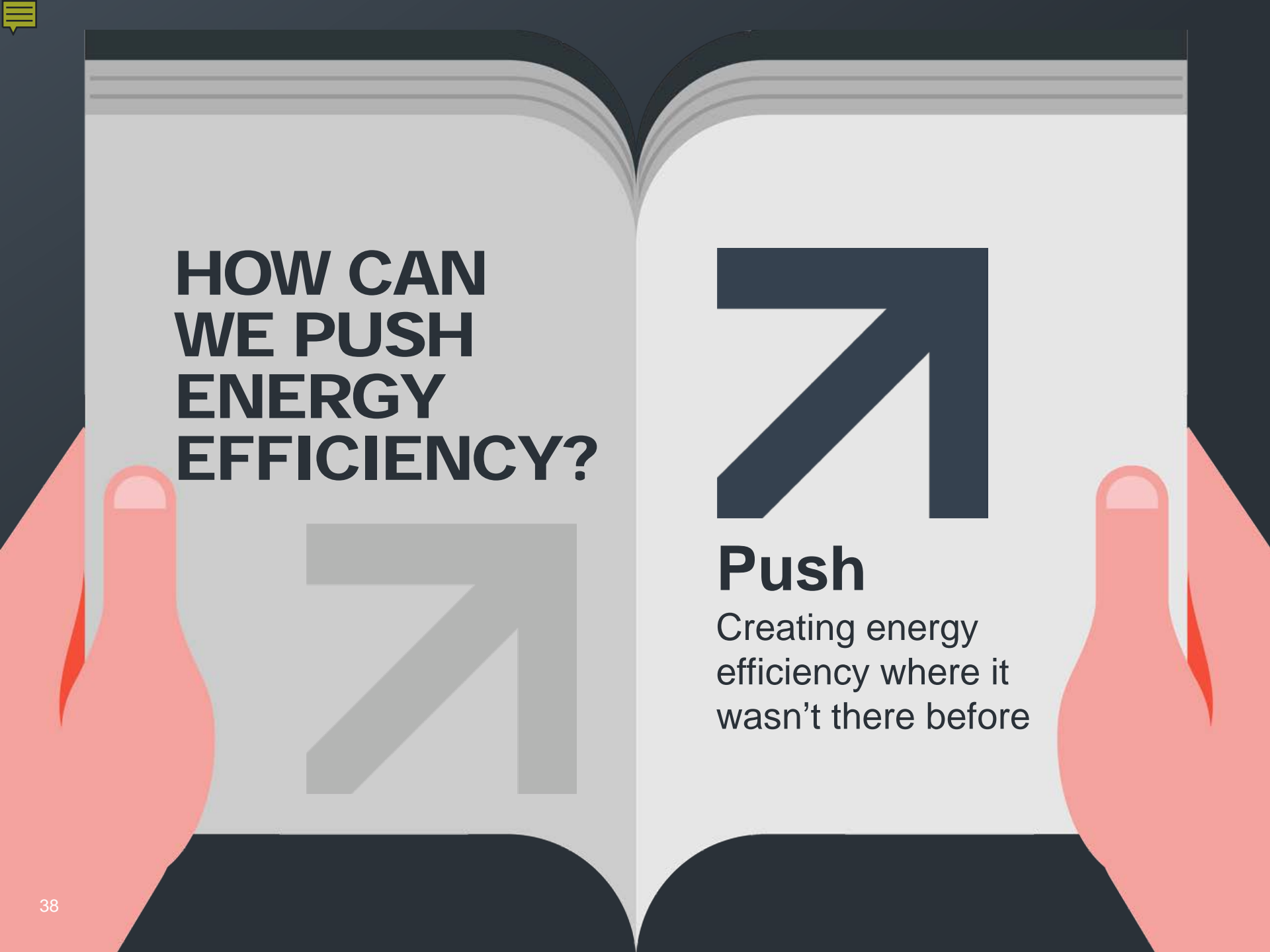


NATIONAL ACCOUNTS
WANT SOME
IMPROVEMENTS



WHAT'S THE
GOAL?





HOW CAN
WE PUSH
ENERGY
EFFICIENCY?



Push

Creating energy
efficiency where it
wasn't there before

STRATEGY ONE



Tipping
the scales to favor
the Northwest

STRATEGY TWO



Finding
the hard-to-
reach pockets

STRATEGY THREE



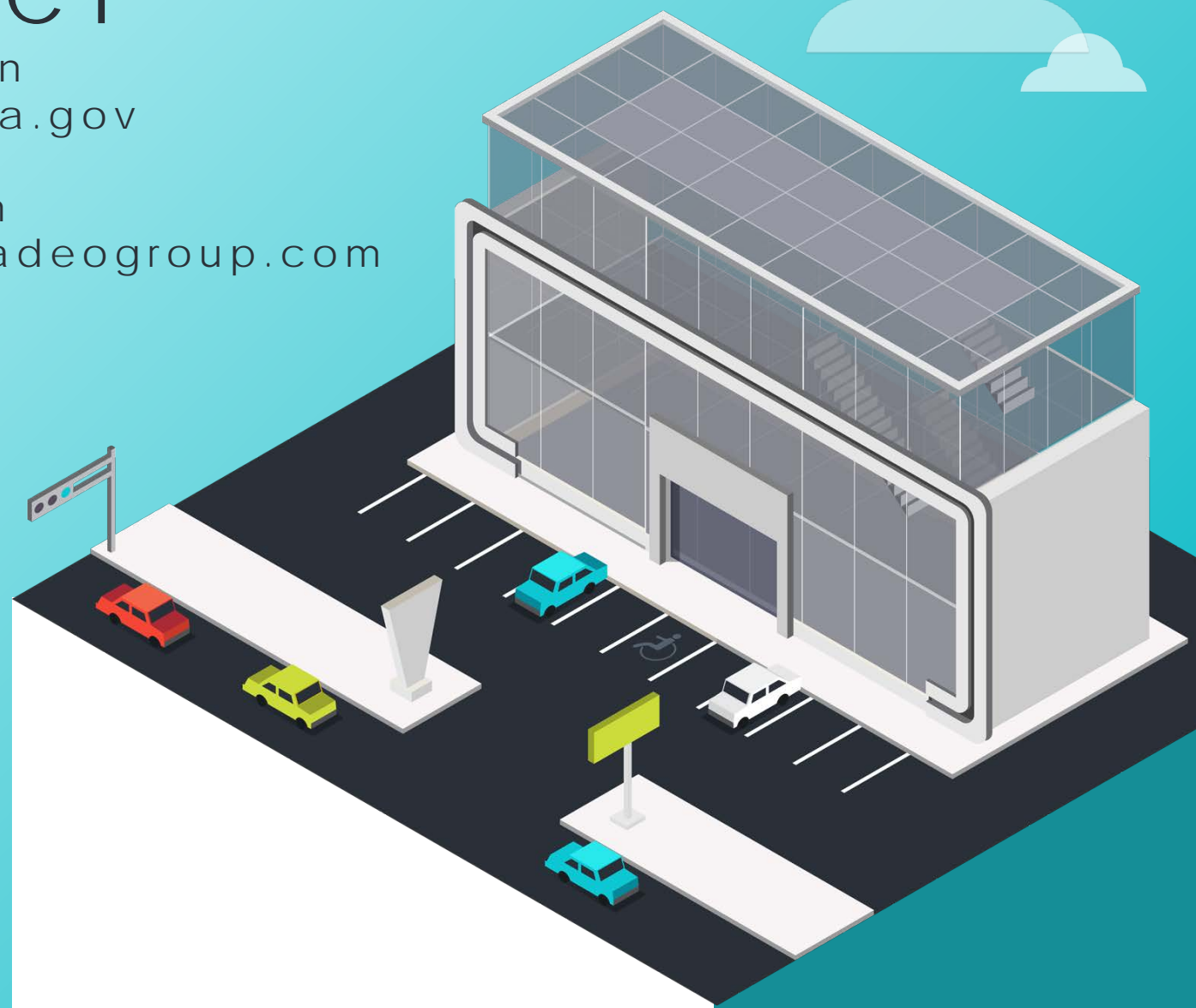
Using
national accounts
to help shape
the future



CONTACT

Bonnie Watson
bfwatson@bpa.gov

Kate Bushman
kbushman@cadeogroup.com





THX!

Thanks for coming!

Join us next month – May 3rd