



Transmission Use Update

6/23/2021

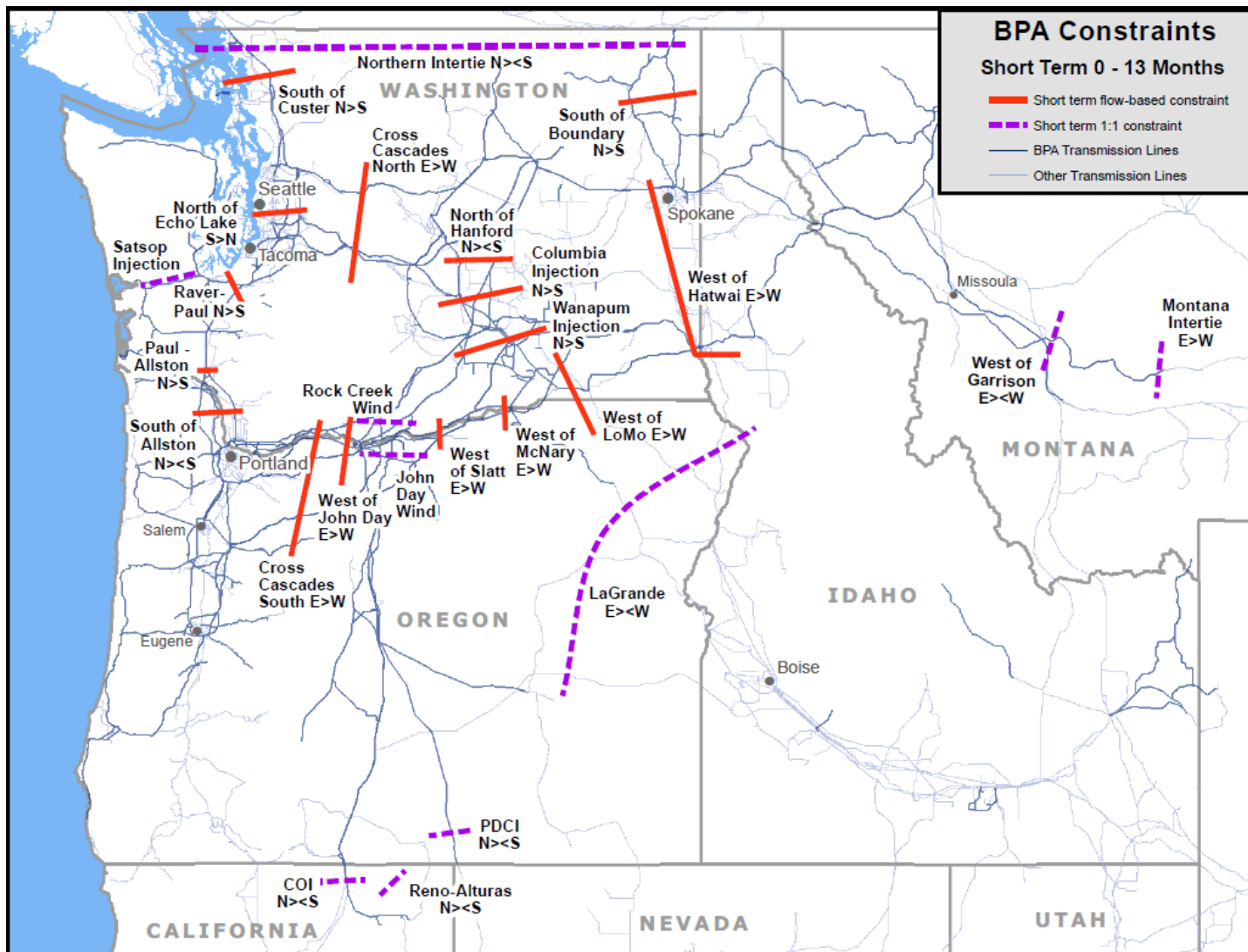


Objective

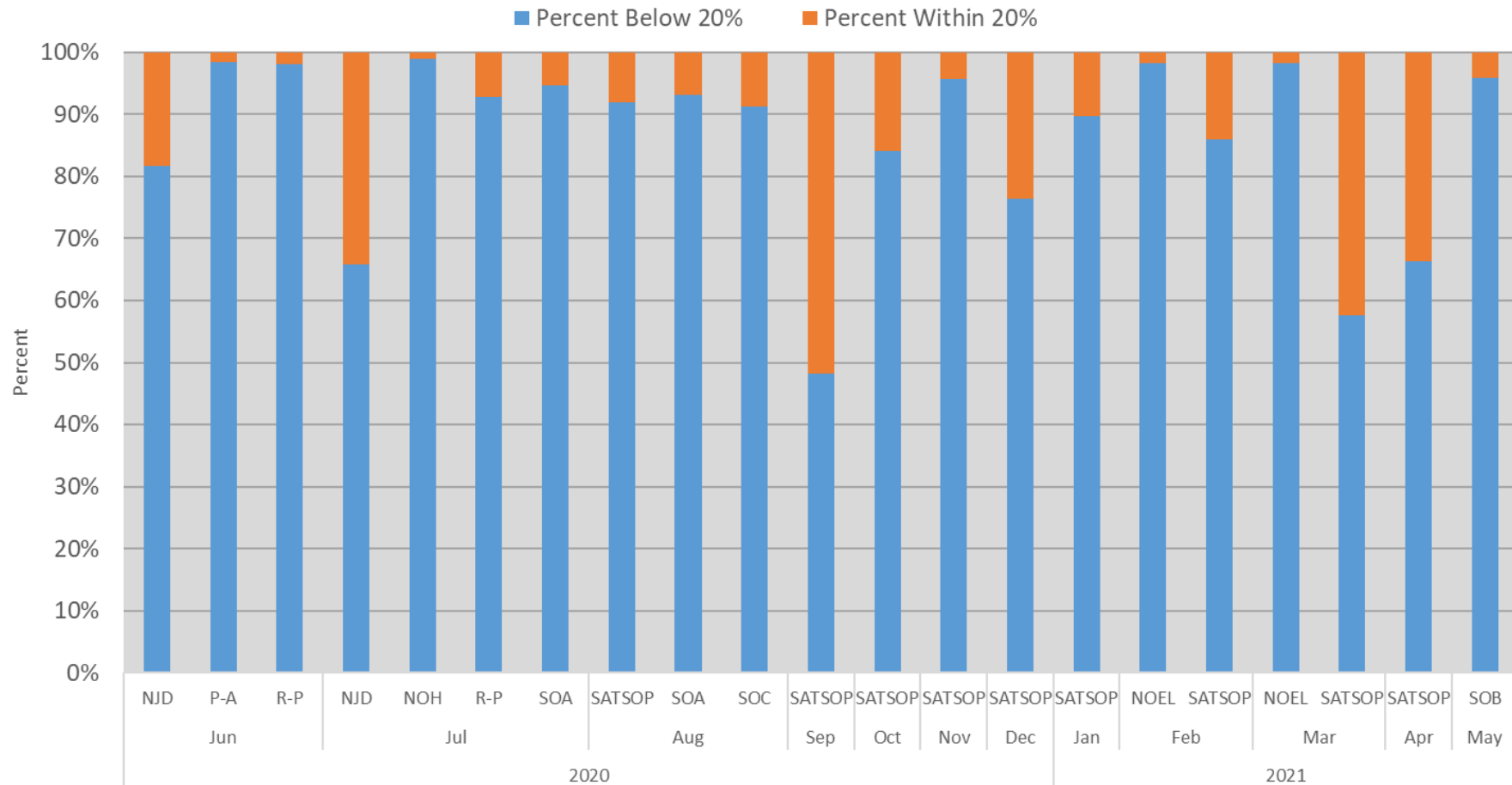
BPA is providing the following Transmission Usage Data:

- Congestion data from the previous 3 months (March – May)
- Flows on North of Echo Lake (NOEL) and South of Alston (SOA)

ATC Short-Term Constraints

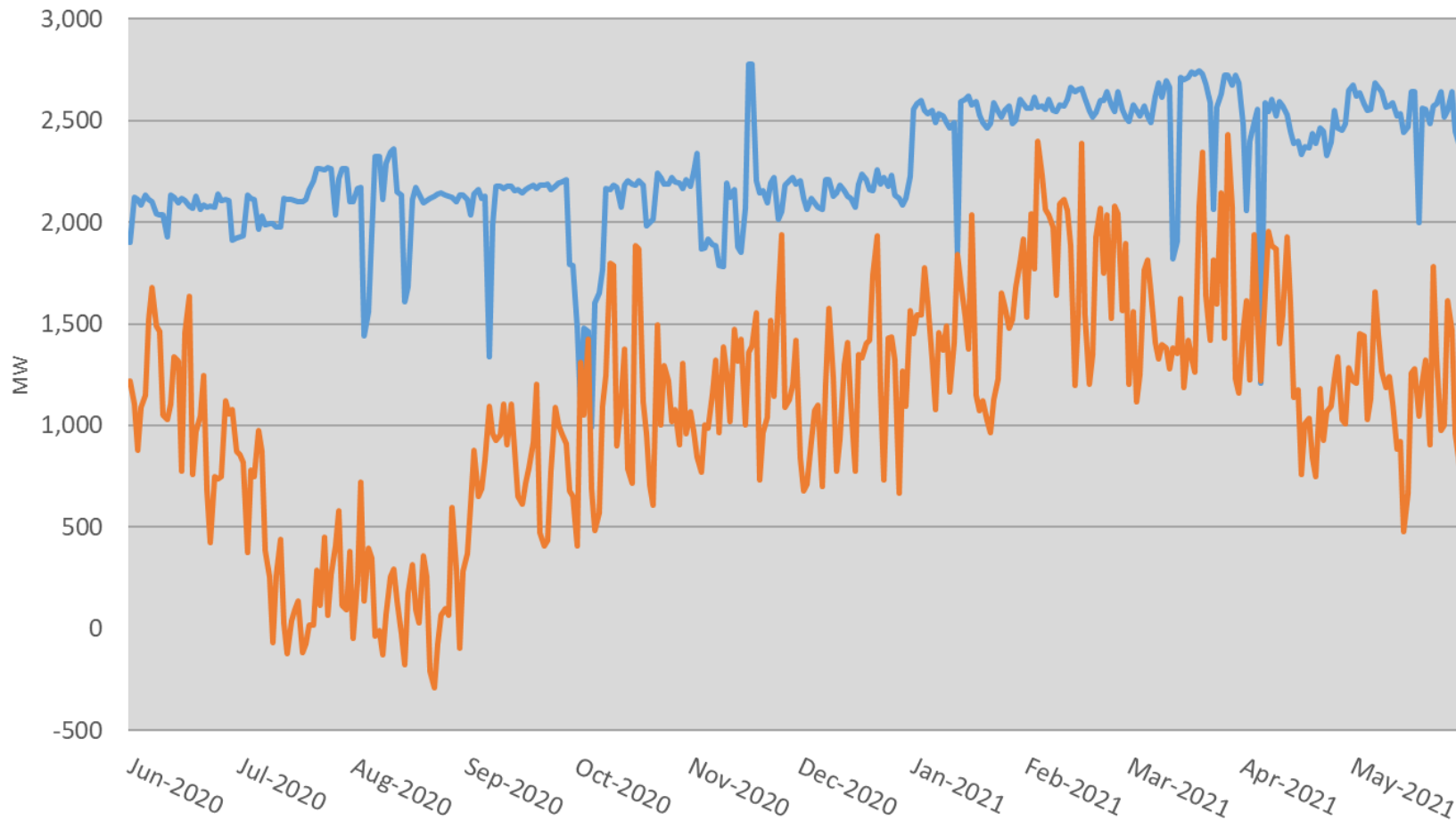


Actual Flows Within 20% of Dynamic Total Transfer Capability (TTC)

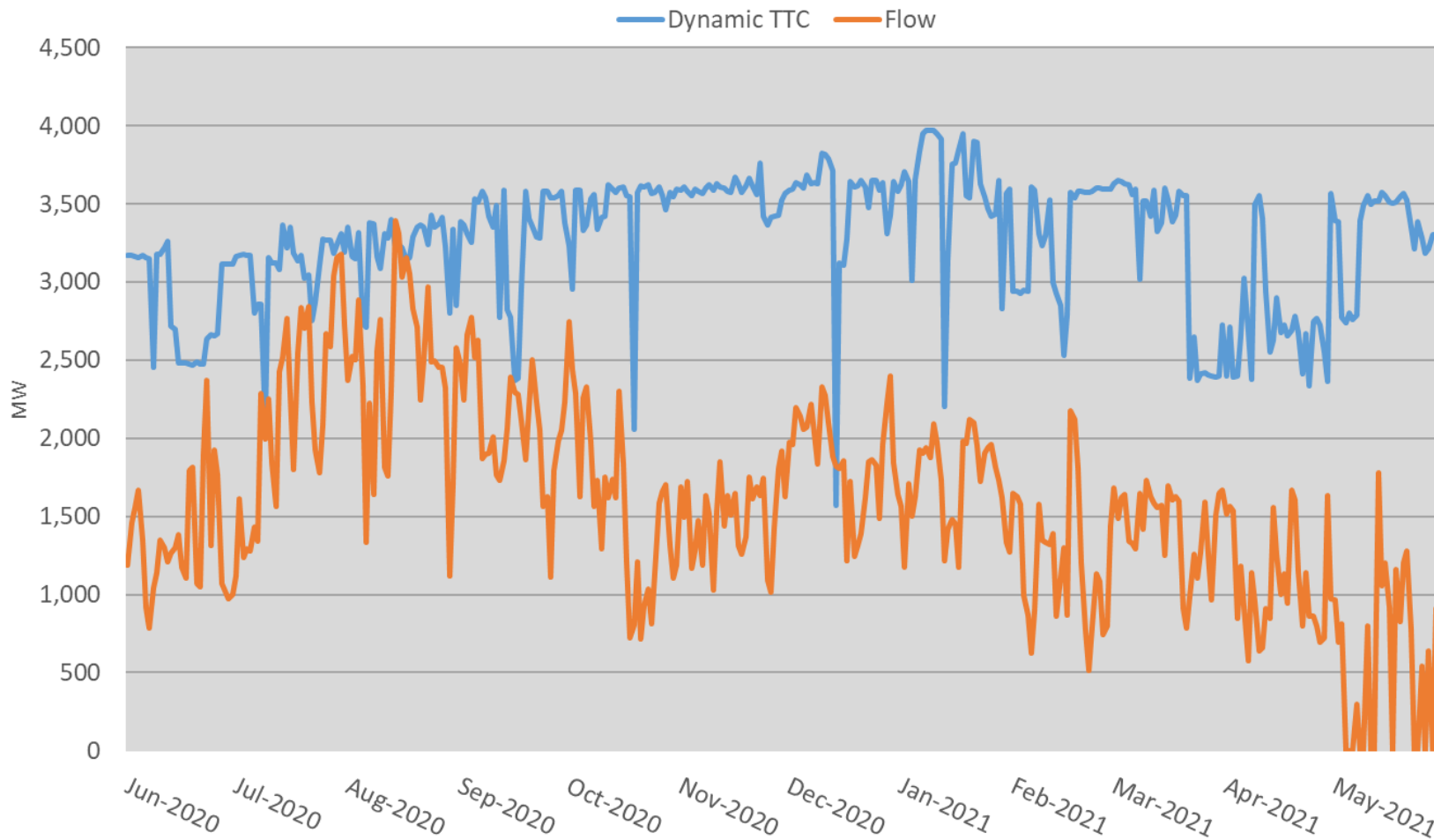


Actual Flow vs Dynamic Total Transfer Capability (TTC) - NOEL

Dynamic TTC Flow



Actual Flow vs Dynamic Total Transfer Capacity - SOA



System Event Details

Curtailments:	0 (System-wide)
TLR Avoidance Events (15 min segments):	0 (TLR Avoidance Events)
Refused TSRs due to TLR Avoidance:	0 (Refused TSRs due to TLR Avoidance)
Planned Outages Requiring Congestion Management:	0 (0 Outages that required action)
Flow-Based Path Redispatch:	0 (Discretionary, NT, and Emergency)
Percentage of hours where actual flows were within 20% of TTC:	1.55% - System-wide (0.38% across NOEL Flowgate)

Wrap Up

- See additional transmission data at the TC-20 Hourly Firm page:

<https://www.bpa.gov/transmission/CustomerInvolvement/TC20Implementation/HourlyFirm/Pages/default.aspx>

- Please send Questions/Comments to techforum@bpa.gov, with a copy to your Account Executive