

Transmission Service Request (TSR) Long Term Process Map – Final

Last Updated: 10/1/2024

Notes

Applicable Business Practices

- Conditional Firm Service (must be in TSEP/Individual Study process to “qualify” for CF service, Sections B and C)
- Requesting Transmission Service
 - Data Exhibits, located in Requesting Transmission Service, Section F
- TSR Study and Expansion Process (TSEP)
- Redirect of Transmission Service
- Transmission Service Requests (TSR) Evaluation

Maximum 15 days from submittal of TSR to Customer correspondence (OATT section 17.4)

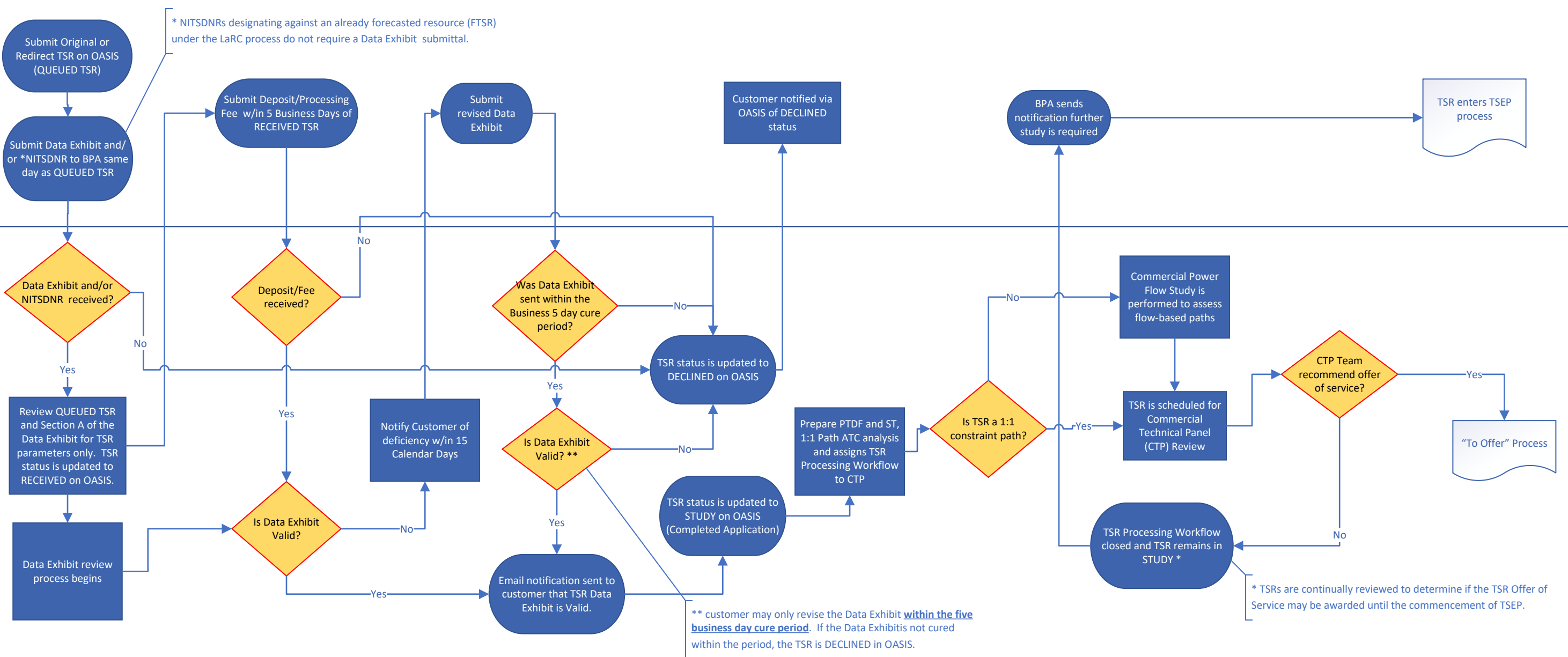
Commercial Power Flow Study Results are posted externally:
<https://www.bpa.gov/energy-and-services/transmission/performance-metrics>

Open Access Transmission Tariff (OATT): Sections 16; 17; 19; 21; 27; 29; 32

This graphic displays the TSR review and Commercial Power Flow Study process.

Customer

BPA



This document is intended for information purposes only. This document does not include all relevant BPA processes and outcomes. Questions and comments should be directed to the appropriate Transmission Account Executive or the TBL Reservation Desk at tblresdesk@bpa.gov.